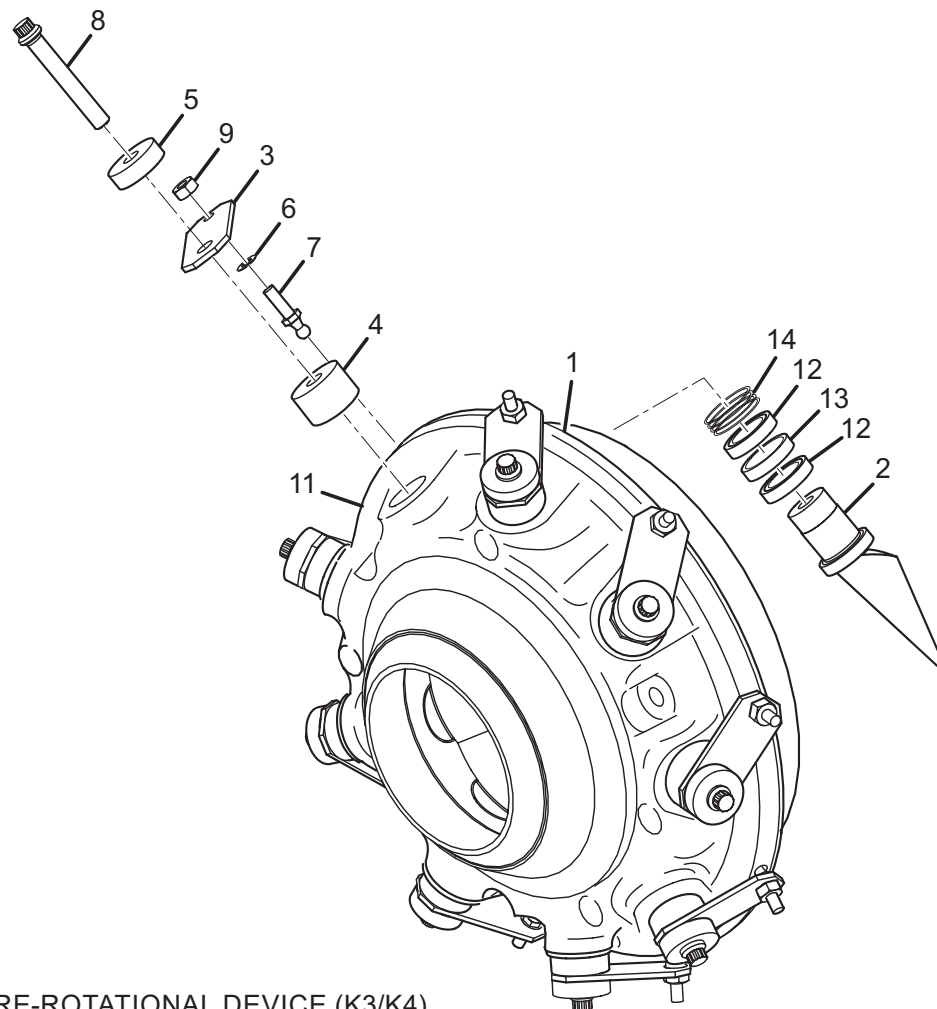


PRE-ROTATIONAL DEVICE

TABLE 26 - PRE-ROTATIONAL DEVICE (K7)

ITEM	DESCRIPTION	PART NUMBER	QUANTITY	FIGURE
-	Pre-Rotational Device Assembly (K7)	364 51515 000	1	-
1	Ring, Vane Driving	064 51514 000	1	53
2	Vane, Pre-Rotation	064 51503 000	9	53
3	Arm, Pre-Rotation Vane	064 51513 000	9	53
4	Spacer, Prv Arm	064 51512 000	9	53
5	Washer, Special Prv Tj-Cb	064 47318 000	9	53
6	Washer, Plain Lt 17/64 Id 1/2	021 11973 000	18	53
7	Stud, Ball 1/4 -28 Unf W/	029 15924 000	9	53
8	Screw, Cap 12 Pt Hd 1/2	021 17265 000	9	53
9	Nut, Self Lock 1/4 - 28unf	021 12943 000	9	53
11	Housing, PRV K3	064 51502 000	1	53
12	Bearing, Ball Deep Groove	029 25081 000	18	53
13	Spacer, PRV Bearing	064 51783 000	9	53
14	Spring, Overlap Type Wave	029 25082 000	18	53

NOTE: Items with an * are NOT represented.


FIGURE 53 - PRE-ROTATIONAL DEVICE (K3/K4)

LD15093a