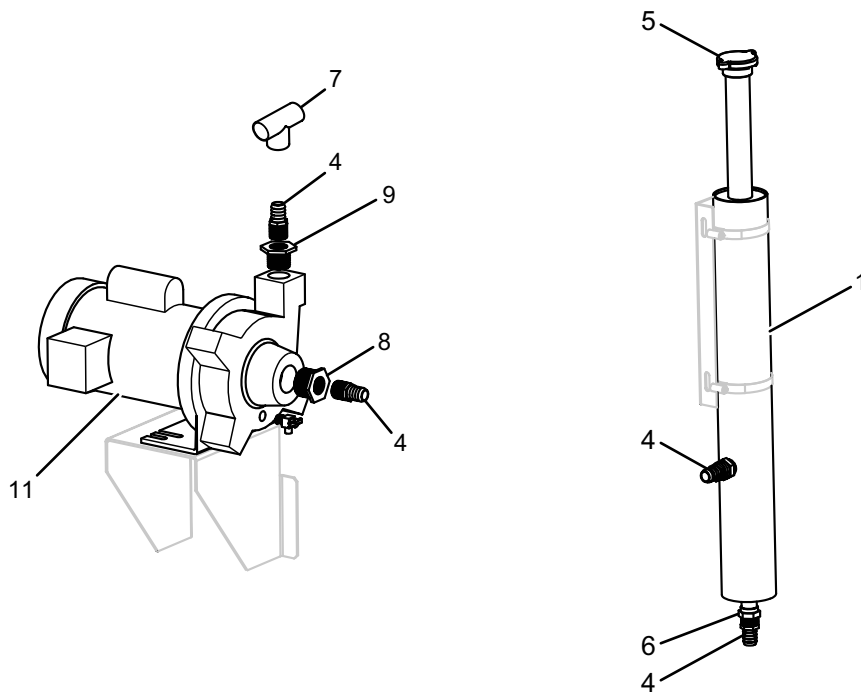


TABLE 68 - GLYCOL LOOP COMPONENTS

| ITEM | MODELS | DESCRIPTION | PART NUMBER | SAP NUMBER | FIGURE |
|------|---|---------------------------------------|---------------|------------|--------|
| 1 | All Models | Tube Glycol Stand Pipe | 075-55649-000 | 753125 | 60 |
| 4 | All Models | Fitting, Hose Barb | 023-21929-000 | 553490 | 60 |
| 5 | All Models | Cap, Radiator | 023-21927-000 | 251502 | 60 |
| 6 | All Models | Adpt, Sld 7/8 x 3/4 | 023-00092-000 | 562520 | 60 |
| 7 | All Models | Tee, Barbed 3/4 X 3/4 X 3/4 | 023-22526-000 | 733653 | 60 |
| 8 | All Models | Bushing, Hex 1-1/4 X 3/4 Steel | 023-21935-000 | 553492 | 60 |
| 9 | All Models | Bushing, Hex 1 X 3/4 Steel | 023-21934-000 | 553493 | 60 |
| 11 | All Models | Pump, Single Stage Centrifugal (60Hz) | 026-41611-000 | 741049 | 60 |
| | 150S, 165H, 175P, 185(S, H, P), 175C, 210(S, H, P), 230S, 240(H, P), 260S, 270(C, S, H, P), 290H, 300(S, H), 310P, 315P, 320S, 330S, 340(S, H), 400P, 405S, 410(H, P), 450S, 490H, 460S, 470C, 480C, 500S | Pump, Single Stage Centrifugal (50Hz) | 026-41611-001 | 359986 | |
| | 370P, 370S, 370H | Pump, Single Stage Centrifugal (50Hz) | 026-41611-002 | 1045701 | |



LD18981

FIGURE 60 - GLYCOL LOOP COMPONENTS