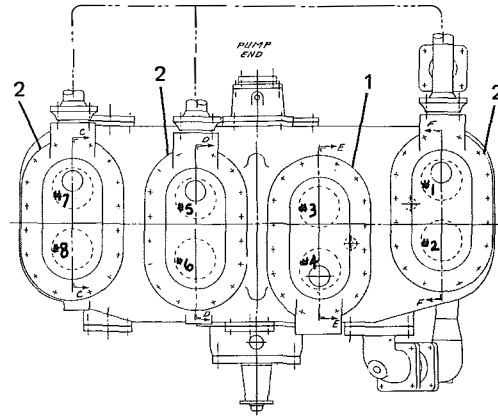
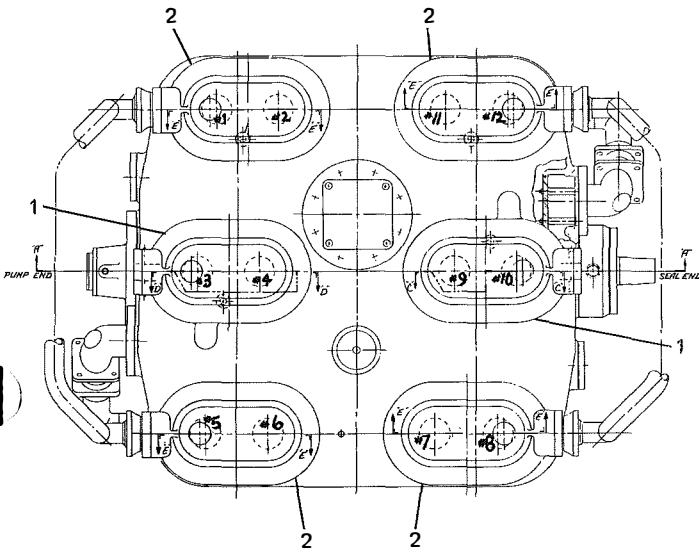


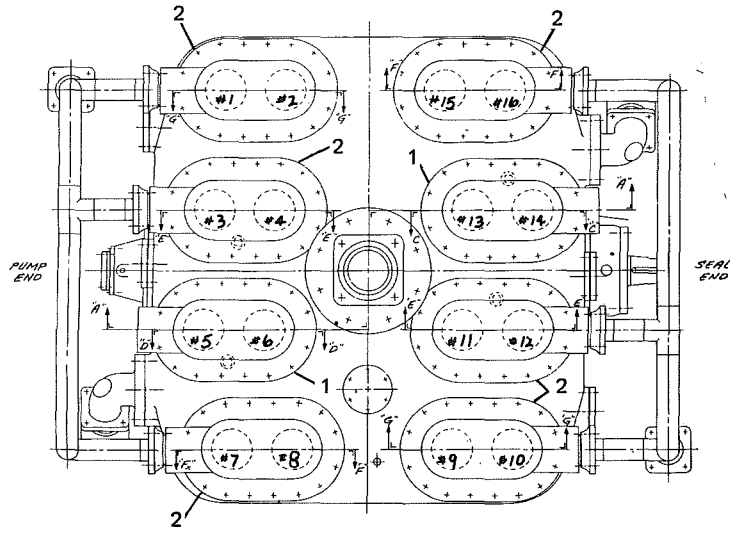
PISTON



8 CYL.



12 CYL.



16 CYL.

FIG. 1 — CONTINUED

Item No.	Description	YC6	YC8	YC12	YC16
9	Bearing Head Ass'y. (Pump end) Includes: Bearing Head Bearing Conn., FLA. 1/2" O.D. x 3/8" NPTE	364-31541	364-31541	364-31541	364-31541
10	Gasket, Br'g. Hd. To Compressor	064-27289	064-27289	064-27289	064-27289
11	Bolt, Br'g. HD; 1/2"-13 x 1-3/4" (8 Req'd.)	021-02751	021-02751	021-02751	021-02751
12	Crankshaft	364-41472	364-41473	364-44164	364-44165
13	Key Crankshaft	065-14876	065-14876	065-14876	065-14876
14	Washer, Coupling	364-28926	364-28926	364-28926	364-28926
15	Bolt, Coupling Washer; 5/8"-11 x 1-3/4"	021-01628	021-01628	021-01628	021-01628
16	Lockwasher; 5/8"	021-05295	021-05295	021-05295	021-05295
17	Cover, Seal	064-28855	064-28855	064-28855	064-28855
18	Bolt, Seal Cover; 3/8"-16 x 4-1/4" (8 Req'd.)	021-09017	021-09017	021-09017	021-09017
19	Gasket, Seal (2 Req'd.)	064-28865	064-28865	064-28865	064-28865
20	Spacer Seal	See Fig. 3	See Fig. 3	See Fig. 3	See Fig. 3
21	Seal, Shaft	029-13450	029-13450	029-13450	029-13450
22	Ring, Retaining	029-13451	029-13451	029-13451	029-13451