

TABLE 3

Item No.	Description	Part No.
1	Piston, Complete (Consists of Items 2, 3, 4, 5, 6)	362-24141
2	Pin, Piston	029-13884
3	Piston, Bare	065-23812
4	Ring, Piston, Ventilated	029-06182
5	Ring, Piston, Plain	029-03525
6	Ring, Retaining (2 Req'd.)	029-13764

FIG. 3- PISTON

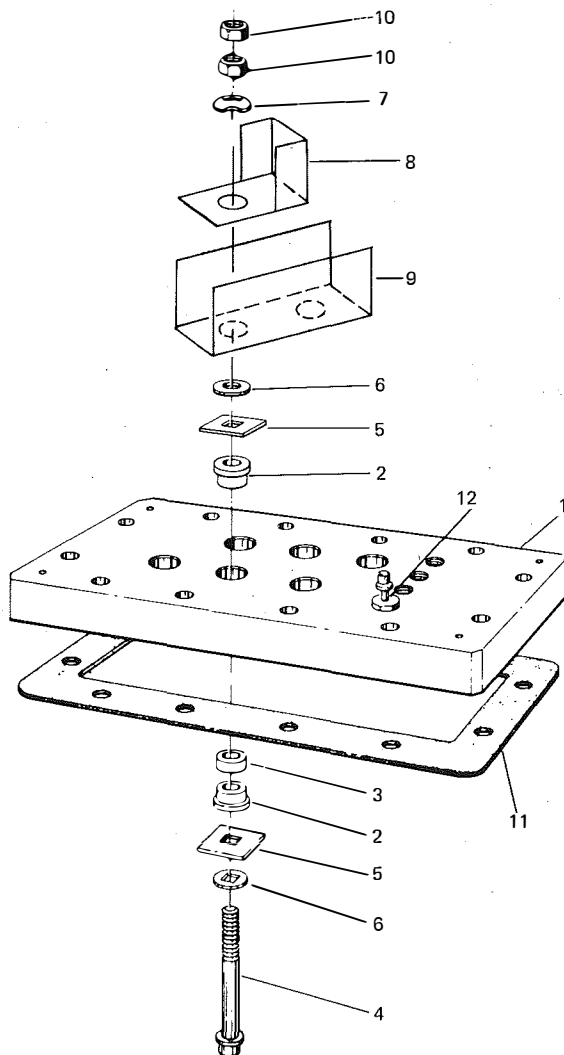


TABLE 4

Item No.	Description	Part No.
1	Block, Terminal	065-22335
2	Bushing, Terminal Bolt	025-10041
3	Packing, Terminal Bolt	028-01445
4	Bolt, Terminal	021-11581
5	Washer, Terminal, Square	028-04753
6	Washer, Terminal	021-07844
7	Washer, Terminal Spring	021-08627
8	Spacer, Insulating (3 Req'd.)	065-23626
9	Spacer, Insulating (3 Req'd.)	065-23627
10	Nut, Hex. Terminal Bolt	021-08581
11	Gasket, Terminal Block	070-15282
12	Terminal, Hermetic	025-09346
	Kit, Terminal Bolt (Consists of Items 2, 3, 5, 6, 7, 8)	365-23372

FIG. 4- MOTOR TERMINAL BLOCK