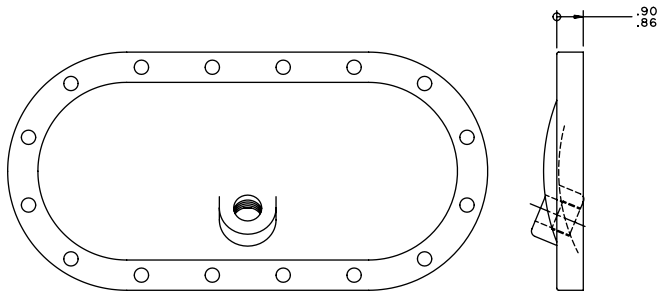


HANDHOLE COVER, FOR CRANKCASE FLOAT SUBASSEMBLY THROUGH SEPTEMBER 2001		
ITEM	DESCRIPTION	PART NO.
1	HANDHOLE COVER	064-26808-000
35	SCREW, HEX FLANGE, .4375-14 X 1.75	021-17692-000

NOTE:

Item number 1 corresponds to same item specified in SECTION 3 – RENEWAL PARTS, Figure 58. Item number 35 corresponds to same item specified in SECTION 3 – RENEWAL PARTS, Figure 47 and Table 2. Torque Item 35 to 78 – 90 lb.-ft.

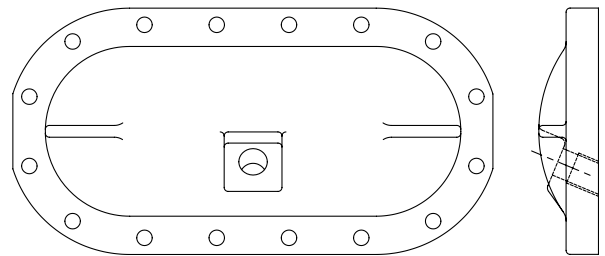


LD07218

HANDHOLE COVER FOR CRANKCASE FLOAT SUBASSEMBLY, AFTER SEPTEMBER 2001		
ITEM	DESCRIPTION	PART NO.
1	HANDHOLE COVER	064-50344-000
27	SCREW, HEX FLANGE, .4375-14 X 2.00	021-17692-000

NOTE:

Item number 1 corresponds to same item specified in SECTION 3 – RENEWAL PARTS, Figure 58. Item number 27 corresponds to same item specified in SECTION 3 – RENEWAL PARTS, Figure 47 and Table 2. Torque Item 27 to 78 – 90 lb.-ft.



LD07219