

DESIGN HISTORY

Access and Handhole Covers

P Compressors, Styles A and B, were produced with the access and handhole covers machined from two different castings through September 2001. The flange thickness of the access cover is greater than that of the handhole covers and requires longer screws.

Beginning in October 2001, P Compressors use only access covers. Handhole covers will no longer be produced and should not, under any circumstances, be used to service P compressors produced after September 2001.

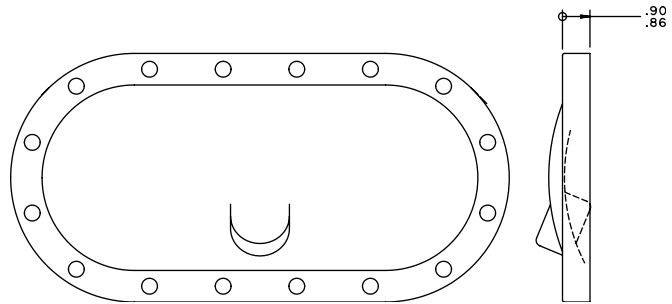


The access cover flange is nominally .17 inch (.13 - .21 inch) thicker than the handhole cover flange. The screw used with the access cover is nominally .25 inch (.19 - .31 inch) longer than the screw used with the handhole cover. The shorter screw, previously specified for use with the handhole cover, may not have adequate thread engagement if used with the access cover. The longer screw, specified for use with the access cover, may “bottom out” in the threaded hole tapped for the shorter screw. Make certain all of the sixteen (16) longer screws, securing an access cover replacing a handhole cover, do NOT “BOTTOM OUT”. Increase the depth of the threaded hole by manually tapping additional threads if necessary. Failure to observe this precaution may result in gasket leaks.

HANDHOLE COVER THROUGH SEPTEMBER 2001		
ITEM	DESCRIPTION	PART NO.
207	HANDHOLE COVER	064-21645-000
35	SCREW, HEX FLANGE, .4375-14 X 1.75	021-17692-000

NOTE:

Item numbers correspond to those specified in SECTION 3 – RENEWAL PARTS, Figure 47 and Table 2. Torque Item 35 to 78 – 90 lb.-ft.



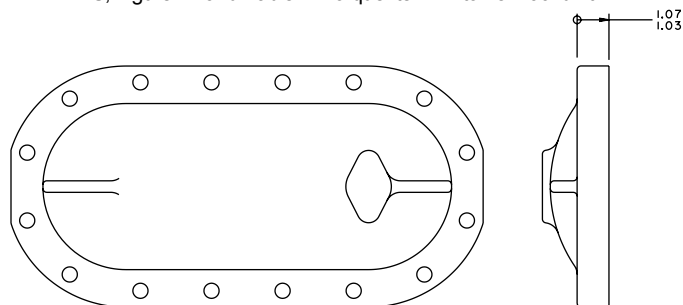
LD07216

**ACCESS COVER AND HANDHOLE COVER
(AFTER SEPTEMBER 2001)**

ITEM	DESCRIPTION	PART NO.
25	ACCESS COVER	064-48176-000
27	SCREW, HEX FLANGE, .4375-14 X 2.00	021-17693-000

NOTE:

Item numbers correspond to those specified in SECTION 3 – RENEWAL PARTS, Figure 47 and Table 2. Torque Item 27 to 78 – 90 lb.-ft.



LD07217