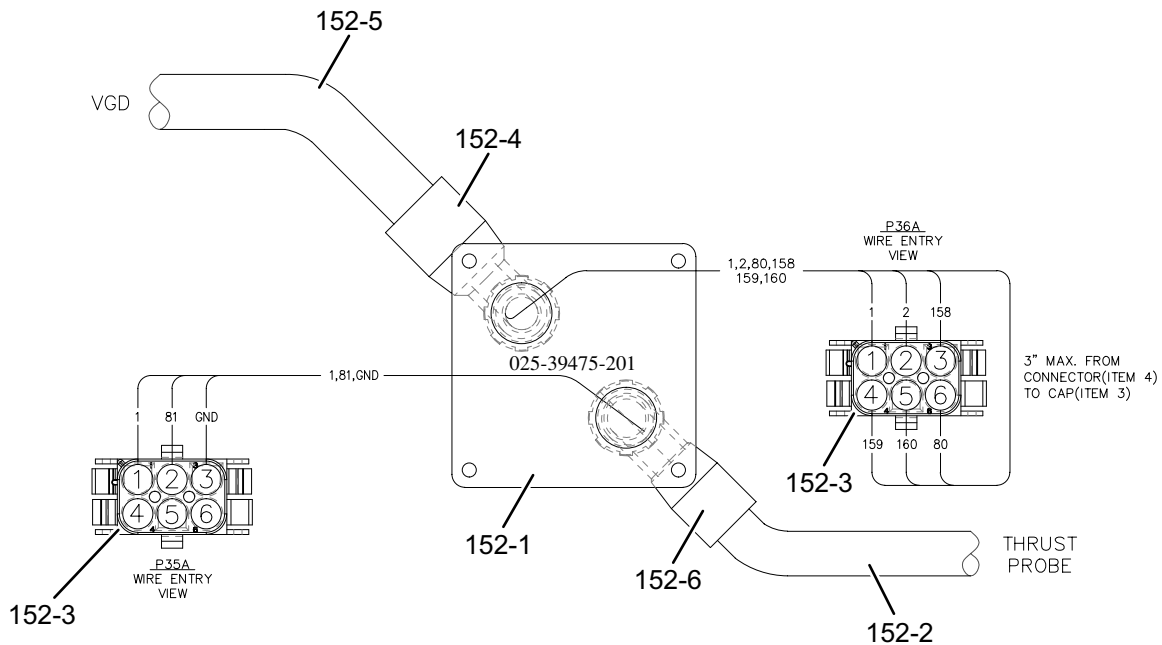


TABLE 13 - SYSTEM WIRING ELECTRO-MECHANICAL STARTER (CONT'D)

ITEM	DESCRIPTION	PART NUMBER	SAP	FIGURE
153-11	Harness Oil Pump To VSOP Panel YK H	392-31793-046	5147876	16,17
	Conduit Elec Flex 1/2 Liquid	025-30473-001	738505	
	Connr, Conduit Flex Straight 1/2" Adaptor	025-31310-001	618160	
	Wire Elec 14 Awg Black	025-08897-000	737229	
	Term Push On Straight	025-06642-000	737207	
	Cont Soc Wire Range 20-14	025-22215-000	62701	
153-12	Connector Plug 15 R=5 6.35Mm	025-20918-000	737623	17
153-13	Fitting Liquid Tight 1/2 Npt	025-28720-000	117421	17
153-14	Locknut, 1/2 Npt, Nylon Black;	025-34090-000	435354	17
154	Connector Din 43650	025-37805-000	144713	16
155	Valve, Ball 3/4-16Unf-2A	022-11715-000	338981	16
156	Transducer Pressure R-22 & 134	025-40088-000	144689	16
157	O-Ring Neo1 00.414Id .072Thk M	028-12961-002	683003	16
158	O-Ring Size=908 2.20 16.40Mm Neo1 N N/A	028-12961-004	588819	16

NOTE: Items with an * are NOT represented.

** Liquid Level Sensor Kit (Includes Sensor & Gasket) 325-47588-006



LD19834

FIGURE 14 - SYSTEM WIRING ELECTRO-MECHANICAL STARTER