

WATERBOX GASKETS (CONT'D)

TABLE 49 - CONDENSER WITH HEAT RECOVERY COMPACT WATERBOXES 150 PSI

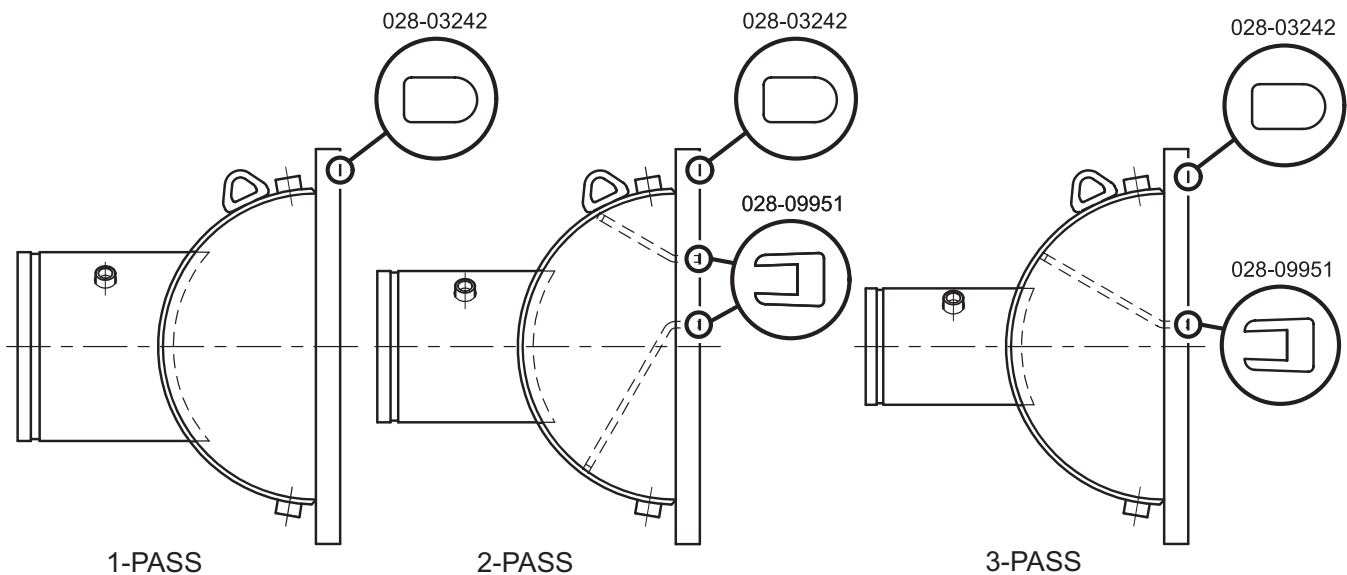
SHELL CODE	1 PASS		2 PASS		3 PASS	
	GASKET P/N	FEET REQUIRED	GASKET P/N	FEET REQUIRED	GASKET P/N	FEET REQUIRED
BW, BX*	028-03242-000	18.5'	028-09951-000	3.5'	028-09951-000	6'
			028-03242-000	18.5'	028-03242-000	18.5'
BW, BX**	028-03242-000	17.5'	028-09951-000	3.5'	028-09951-000	6'
			028-03242-000	17.5'	028-03242-000	17.5'
IW, IX*	028-03242-000	21'	028-09951-000	4'	028-09951-000	7'
			028-03242-000	21'	028-03242-000	21'
IW, IX**	028-03242-000	19.5'	028-09951-000	4'	028-09951-000	7'
			028-03242-000	19.5'	028-03242-000	19.5'
OW, OX O8, O9*	028-03242-000	24.5'	028-09951-000	4.5'	028-09951-000	8'
			028-03242-000	24.5'	028-03242-000	24.5'
OW, OX O8, O9**	028-03242-000	22.5'	028-09951-000	4.5'	028-09951-000	8'
			028-03242-000	22.5'	028-03242-000	22.5'
UW, UX U8, U9*	028-03242-000	26'	028-09951-000	5'	028-09951-000	8.5'
			028-03242-000	26'	028-03242-000	26'
UW, UX U8, U9**	028-03242-000	24.5'	028-09951-000	4.5'	028-09951-000	8.5'
			028-03242-000	24.5'	028-03242-000	24.5'
YW, YX Y8, Y9*	028-03242-000	37'	028-09951-000	7'	028-09951-000	12'
			028-03242-000	37'	028-03242-000	37'
YW, YX Y8, Y9**	028-03242-000	33'	028-09951-000	6.5'	028-09951-000	12'
			028-03242-000	33'	028-03242-000	33'

NOTE:

* Cooling Only Waterbox Arrangement

**Heat Recovery Waterbox Arrangement

When ordering Gasket Material specify length required by replacing the -000 with either -025 for 25', -050 for 50', or -100 for 100'.



LD13823

FIGURE 56 - CONDENSER HEAT RECOVERY 150 LB. WATERBOX GASKET