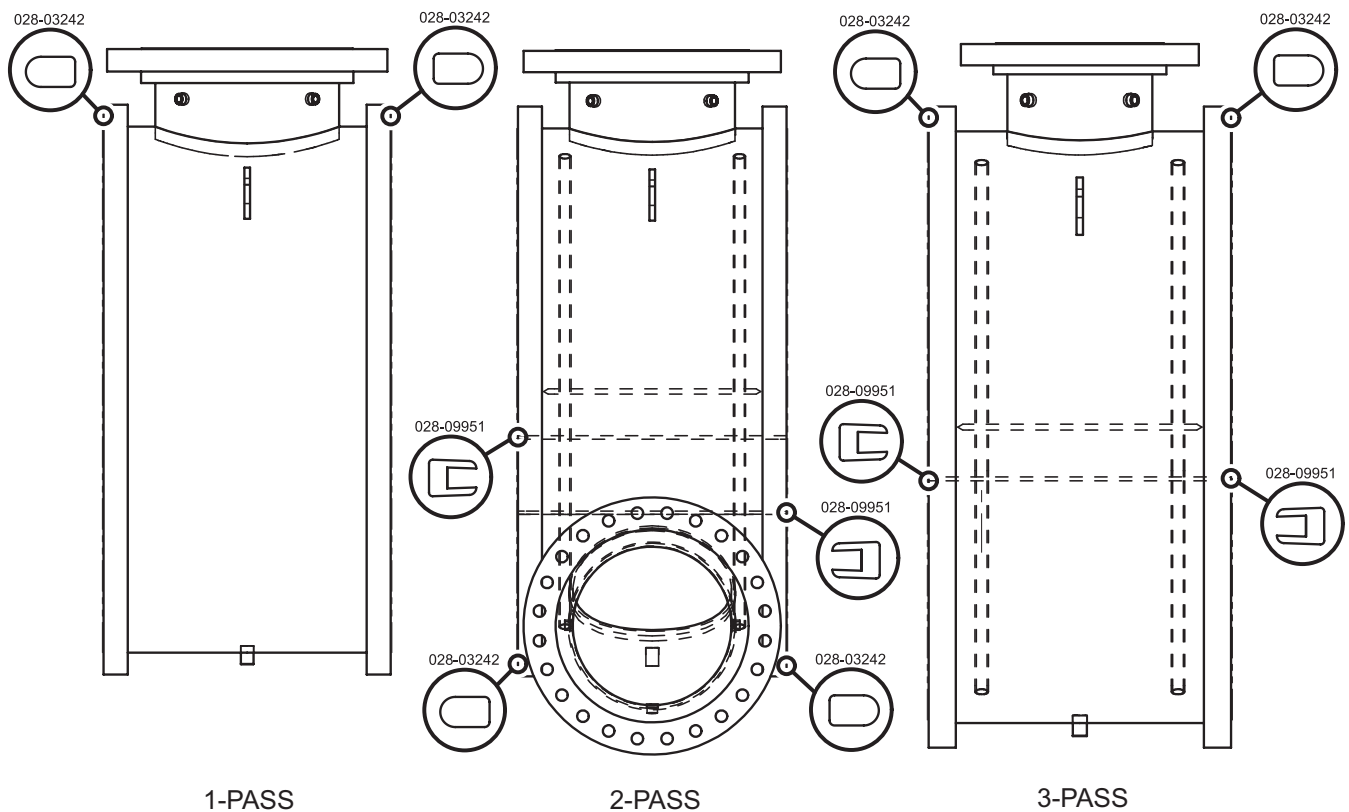


## WATERBOX GASKETS (CONT'D)

**TABLE 48 (CONT'D) - EVAPORATOR WITH MARINE WATERBOXES 300 PSI (CONT'D)**

SHELL CODE	1 PASS		2 PASS		3 PASS	
	GASKET P/N	FEET REQUIRED	GASKET P/N	FEET REQUIRED	GASKET P/N	FEET REQUIRED
RQ-RV	028-03242-000	56'	028-09951-000 028-03242-000	9' 42'	028-09951-000 028-03242-000	16' 52'
R2-R7						
SQ-SV						
S3-S7						
WP-WT						
W1-W6						
XQ-XS	028-03242-000	65'	028-09951-000 028-03242-000	11' 48.7'	028-09951-000	65'
X2-X4						
ZQ-ZS						
Z1-Z4						

**NOTE:** When ordering Gasket Material specify length required by replacing the -000 with either -025 for 25', -050 for 50', or -100 for 100'.



LD13160

**FIGURE 55 - EVAPORATOR 300 LB. MARINE WATERBOX GASKET**