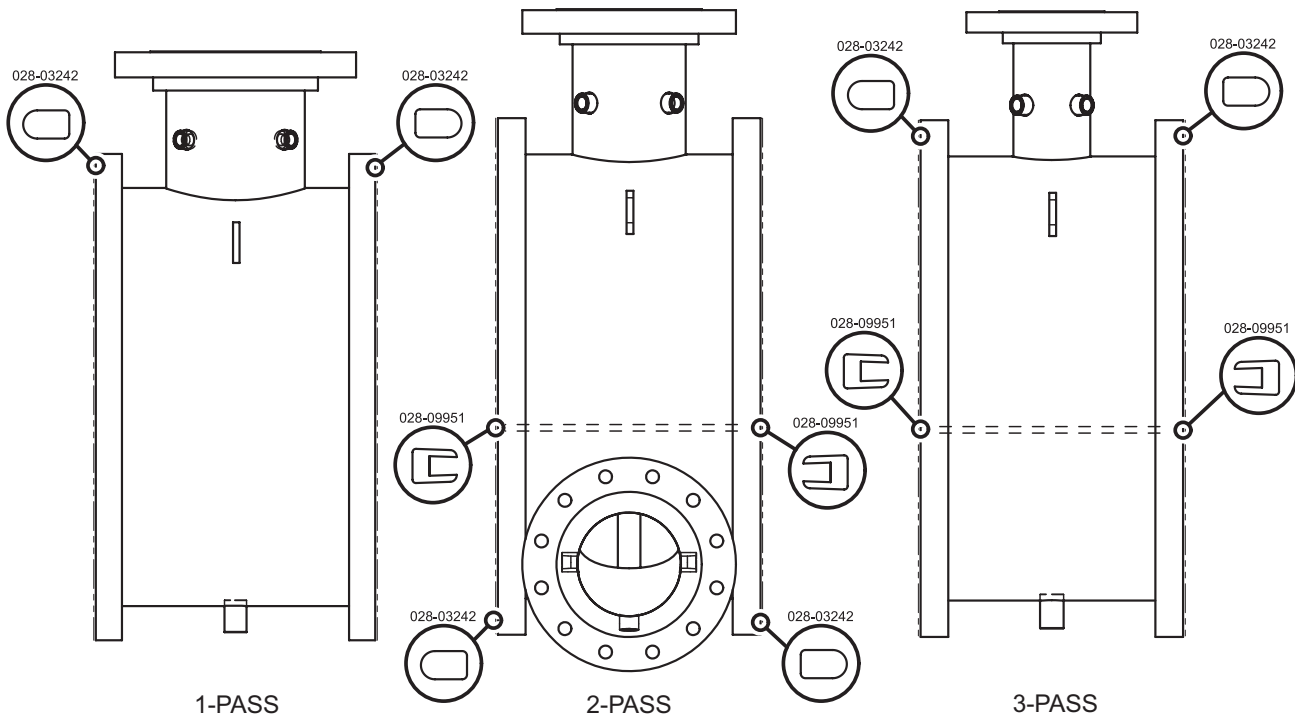


## WATERBOX GASKETS (CONT'D)

**TABLE 48 - EVAPORATOR WITH MARINE WATERBOXES 300 PSI**

SHELL CODE	1 PASS		2 PASS		3 PASS	
	GASKET P/N	FEET REQUIRED	GASKET P/N	FEET REQUIRED	GASKET P/N	FEET REQUIRED
AP-AS	028-03242-000	56'	028-09951-000	4.4'	028-09951-000	7.8'
			028-03242-000	22'	028-03242-000	29.2'
CP-CS	028-03242-000	31.6'	028-09951-000	5.1'	028-09951-000	8.9'
DP-DS			028-03242-000	23.6'	028-03242-000	32'
EP-ET	028-03242-000	35.8'	028-09951-000	3.4'	028-09951-000	11.6'
FQ-FT			028-03242-000	26.4'	028-03242-000	35.8'
GQ-GS	028-03242-000	42.7'	028-09951-000	7.4'	028-09951-000	12'
HQ-HS			028-03242-000	32.1'	028-03242-000	42.7'
JP-JS	028-03242-000	47.6'	028-09951-000	7.6'	028-09951-000	13.4'
KP-KX			028-03242-000	35.7'	028-03242-000	47.6'
K2-K7						
LQ-LS						
MQ-MS	028-03242-000	52'	028-09951-000	8.5'	028-09951-000	15'
M2-M4			028-03242-000	39'	028-03242-000	52'
NQ-NS						
N2-N4						
PQ-PS	028-03242-000	56'	028-09951-000	9'	028-09951-000	16'
P2-P4			028-03242-000	42'	028-03242-000	52'
QQ-QV						
Q2-Q4						

**NOTE:** When ordering Gasket Material specify length required by replacing the -000 with either -025 for 25', -050 for 50', or -100 for 100'.



**FIGURE 54 - EVAPORATOR 300 LB. MARINE WATERBOX GASKET**

LD13159