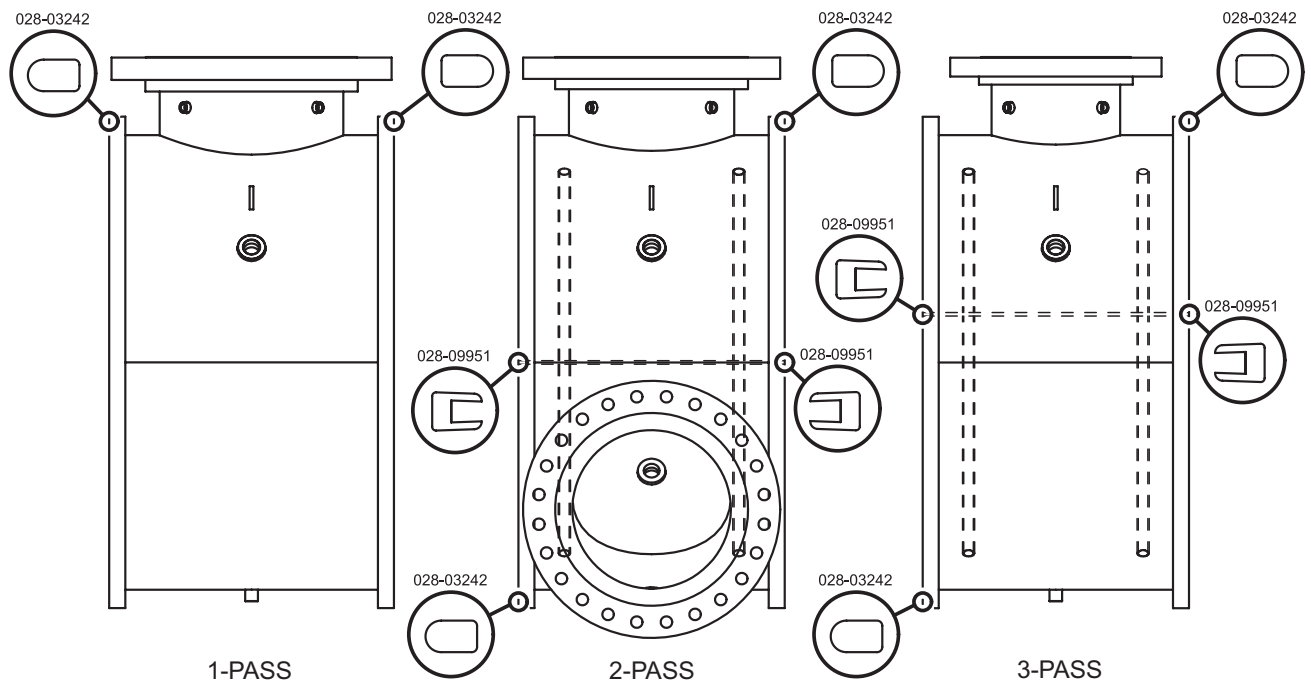


WATERBOX GASKETS (CONT'D)

TABLE 46 (CONT'D) - CONDENSER WITH MARINE WATERBOXES 300 PSI

SHELL CODE	1 PASS		2 PASS		3 PASS	
	GASKET P/N	FEET REQUIRED	GASKET P/N	FEET REQUIRED	GASKET P/N	FEET REQUIRED
RQ-RS	028-03242-000	51.5'	028-09951-000	8'	028-09951-000	16'
R2-R4			028-03242-000	39'	028-03242-000	51.5'
SQ-SS						
S2-S4						
TP-TS	028-03242-000	56'	028-09951-000	9.4'	028-09951-000	18.2'
T2-T5			028-03242-000	42'	028-03242-000	60.1'
VP-VS						
V2-V5						
WQ-WS						
W1-W4						
ZQ-ZS	028-03242-000	60.1'	028-09951-000	9.4'	028-09951-000	18.2'
Z1-Z4			028-03242-000	45.1'	028-03242-000	60.1'

NOTE: When ordering Gasket Material specify length required by replacing the -000 with either -025 for 25', -050 for 50', or -100 for 100'.



LD13154

FIGURE 51 - CONDENSER 300 LB. MARINE WATERBOX GASKET