

WATERBOX GASKETS (CONT'D)

TABLE 45 (CONT'D) - CONDENSER WITH MARINE WATERBOXES 150 PSI

SHELL CODE	1 PASS		2 PASS		3 PASS	
	GASKET P/N	FEET REQUIRED	GASKET P/N	FEET REQUIRED	GASKET P/N	FEET REQUIRED
RQ-RS	028-03242-000	52.8'	028-09951-000	8'	028-09951-000	8'
R2-R4			028-03242-000	39.6'	028-03242-000	39.6'
SQ-SS						
S2-S4						
TP-TS	028-03242-000	55.7'	028-09951-000	8.7'	028-09951-000	8.7'
T2-T5			028-03242-000	41.8'	028-03242-000	41.5'
VP-VS						
V2-V5						
WQ-WS						
W1-W4						
XQ-XS	028-03242-000	60'	028-09951-000	24.5'	028-09951-000	18.5'
X1-X4			028-03242-000	30.5'	028-03242-000	60'
ZQ-ZS	028-03242-000	55.3'	028-09951-000	9.4'	028-09951-000	18.5'
Z1-Z4			028-03242-000	41.5'	028-03242-000	55.3'

NOTE: When ordering Gasket Material specify length required by replacing the -000 with either -025 for 25', -050 for 50', or -100 for 100'.

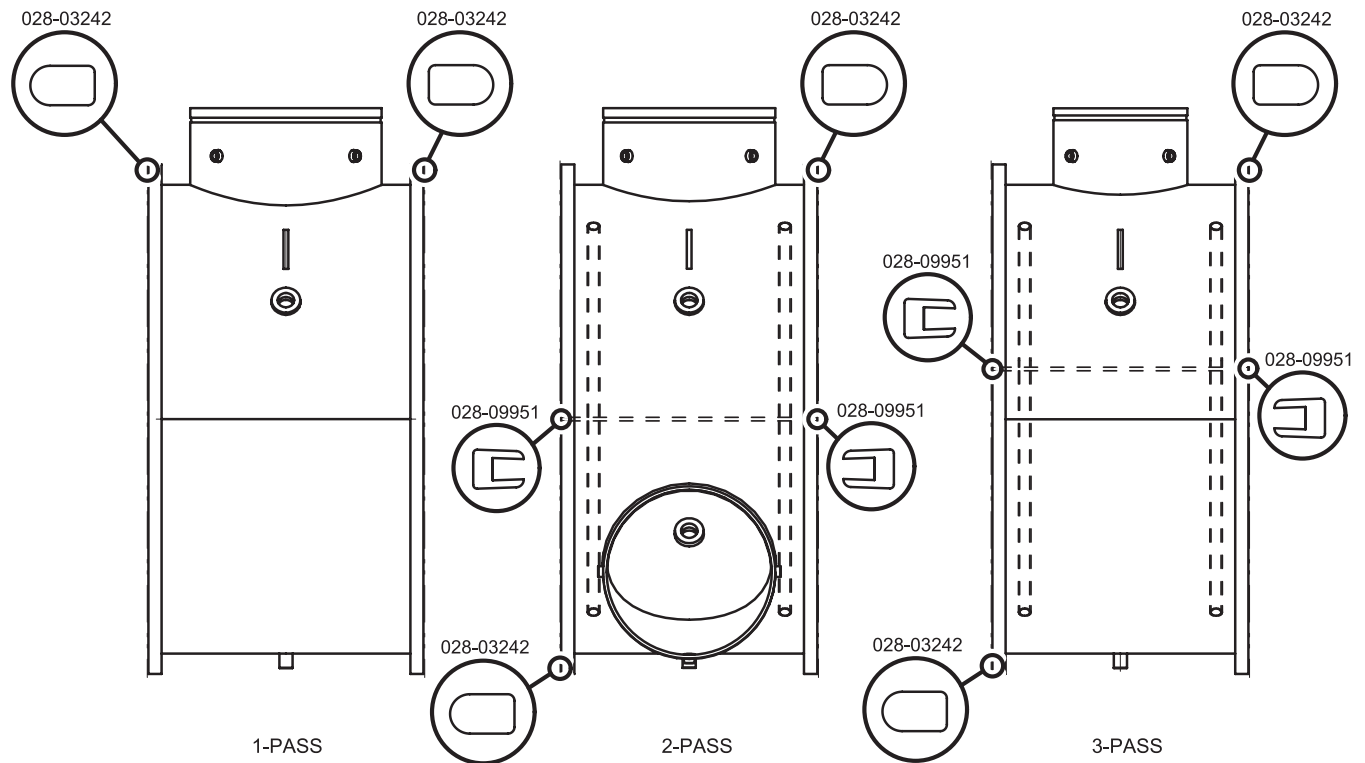


FIGURE 49 - CONDENSER 150 LB. MARINE WATERBOX GASKET

LD13154