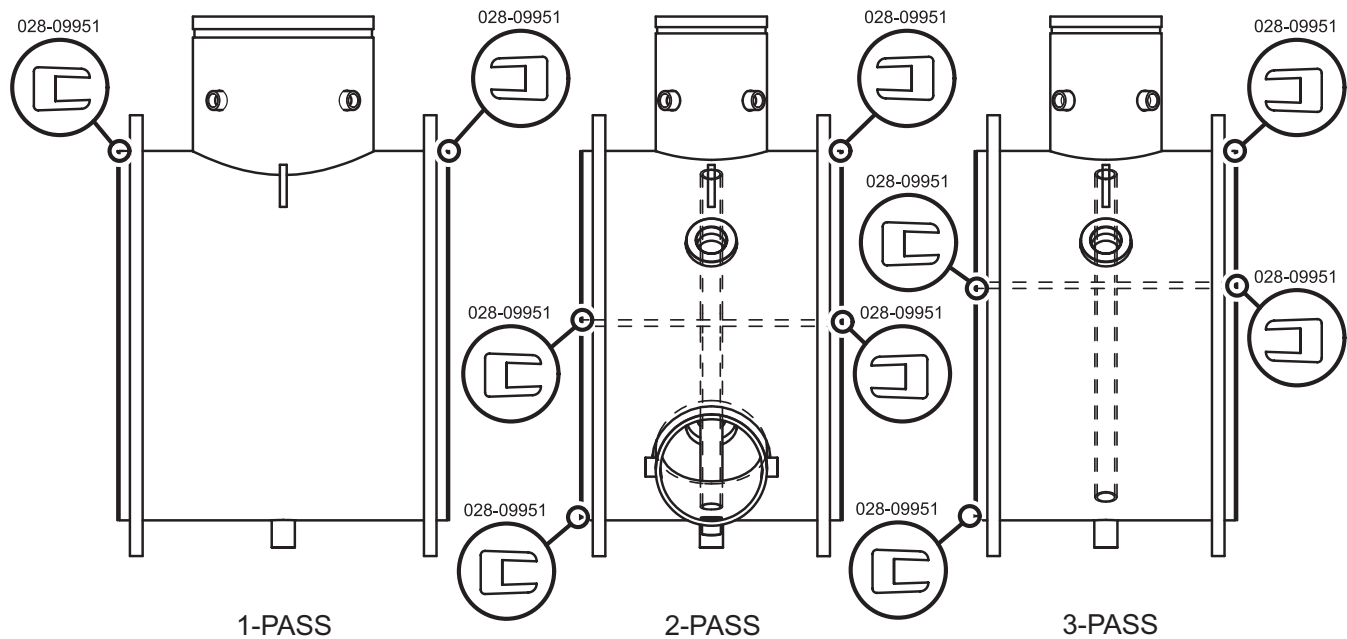


## WATERBOX GASKETS (CONT'D)

**TABLE 45 - CONDENSER WITH MARINE WATERBOXES 150 PSI**

SHELL CODE	1 PASS		2 PASS		3 PASS	
	GASKET P/N	FEET REQUIRED	GASKET P/N	FEET REQUIRED	GASKET P/N	FEET REQUIRED
AP-AS	028-09951-000	22.7'	028-09951-000	20.7'	028-09951-000	20.7'
CP-CS	02809951-000	27.2'	028-09951-000	27.2'	028-09951-000	35.4'
DP-DS						
EP-ET	028-09951-000	31'	028-09951-000	28.2'	028-09951-000	40.6'
FP-FS						
JP-JS	028-09951-000	35.2'	028-09951-000	32'	028-09951-000	41'
KP-KS						
K2-K4						
LQ-LS						
MP-MS	028-03242-000	42'	028-09951-000	17'	028-09951-000	13'
M2-M4						
NP-NS			028-03242-000	21'	028-03242-000	42'
N2-N4						
MB-MH	-	-	028-09951-001	17'	028-09951-001	13'
NB-NH			028-03242-000	31.5'	028-03242-000	42'
PQ-PS	028-03242-000	47'	028-09951-000	8'	028-09951-000	15'
P2-P4						
QQ-QS			028-03242-000	47'	028-03242-000	47'
Q2-Q4						

**NOTE:** When ordering Gasket Material specify length required by replacing the -000 with either -025 for 25', -050 for 50', or -100 for 100'.



**FIGURE 48 - CONDENSER 150 LB. MARINE WATERBOX GASKET**

LD13153