

PRE-ROTATIONAL DEVICE

TABLE 20 - PRE-ROTATIONAL DEVICE (K1/K2)

ITEM	DESCRIPTION	PART NUMBER	QUANTITY	FIGURE
-	Pre-Rotational Device Assembly (K1)	364 57667 000	-	-
-	Pre-Rotational Device Assembly (K2)	364 51763 000	-	-
1	Ring, Vane Driving K1-2	064 51667 000	1	41
2	Vane, Pre-Rotation K1-2	064 51641 000	9	41
3	Arm, Pre-Rotation Vane	064 47508 000	9	41
4	Spacer, Prv Arm K1-2	064 51668 000	9	41
5	Washer, Special Prv Tj-Cb	064 47516 000	9	41
6	Washer, Plain Lt 17/64 Id 1/2	021 11973 000	18	41
7	Stud, Ball 1/4 -28 Unf W/	029 15924 000	9	41
8	Screw, Cap 12 Pt Hd 1/2	021 11515 000	9	41
9	Nut, Self Lock 1/4 - 28unf	021 12943 000	9	41
11	Housing, PRV K1	064 51764 000	1	41
11	Housing, PRV K2	064 51642 000	1	41
12	Bearing, Ball Deep Groove	029 25106 000	18	41
13	Spacer	064 51815 000	9	41
14	Spring, Crest-To-Crest Type	029 25107 000	9	41

NOTE: Items with an * are NOT represented.

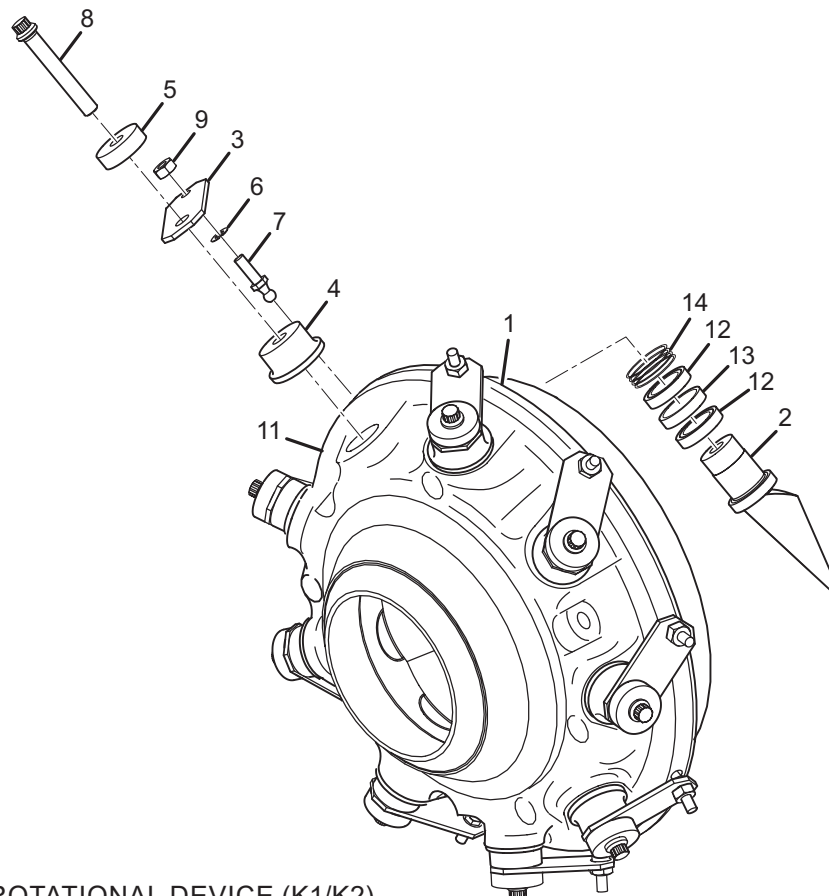


FIGURE 41 - PRE-ROTATIONAL DEVICE (K1/K2)

LD15093