

OPEN TURBOPAK CENTRIFUGAL LIQUID CHILLING UNITS

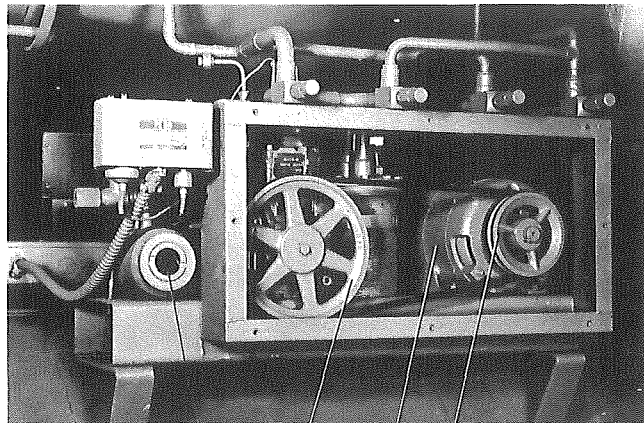
RENEWAL PARTS

Supersedes: 160.53-RP (Sect. 4) (873)

487

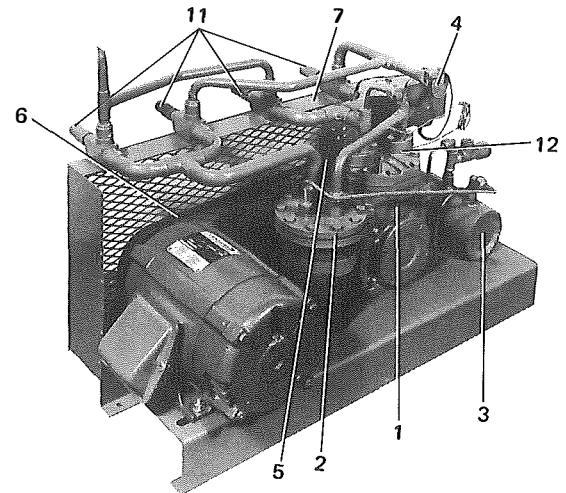
Form 160.63-RP1.1 (Sect. 4)

MODELS HT R3 G1 THRU HT T2 G2 (STYLE A, B, C) MODELS OT R3 G1 THRU OT T2 G2 (STYLE A, B, C, D) 650 THRU 1300 TONS REFRIGERANT TRANSFER UNIT



8,9,10 5 13 14

Voltage	Part No.
208-3-60	366-13641-002
230/460-3-60	366-13641-003
550/575/600-3-60	366-13641-005
380-3-60	366-13641-009
380-3-50	366-13641-006
415-3-50	366-13641-008


FIG. 1—REFRIGERANT TRANSFER UNIT – FRONT VIEW – REAR VIEW

Item	Part Description	Quan.	Part Number
1	Compressor, Automotive	1	367-57514
2	Separator, Oil	1	026-14906
3	Reservoir, Oil	1	367-55906
4	Control, Dual; High & Low Press.	1	025-11839
5	Pulley, V-Belt; 7.75 O.D. X 7.50 P.D.	1	028-07800
6	Belt, "V"; Super Multiple, Single	1	028-04892
7	Guard, Belt	1	366-13728
8	Gasket, 1.921 OD X 1.421 ID X 1/16 Thk.	1	070-02545
9	Glass, Sight 1.862 Dia. X .360 Thk.	1	026-02634
10	Gasket, 1.921 OD X 1.421 ID X 1/32 Thk.	1	070-02399
11	Valve, Compr.	4	022-01669
12	Gasket	2	028-07153

VARIABLE COMPONENTS

Item	Description	Quan.	60 Hertz				50 Hertz	
			366-13641-002 208V 3PH	366-13641-003 230/400V 3PH	366-13641-005 500/575/600V 3PH	366-13641-009 380V 3PH	366-13641-006 380V 3PH	366-13641-008 415V 3PH
13	Motor, 3 H.P.	1	024-15200	024-15198	024-15199	024-18240	024-15201	024-15203
14	Pulley, V-Belt	1	028-06888	028-06888	028-06888	028-06888	028-07889	028-07889