

**MODELS LTD53 AND LTD59
LINKAGE - EXTERNAL PRV
ELECTRICALLY OPERATED**

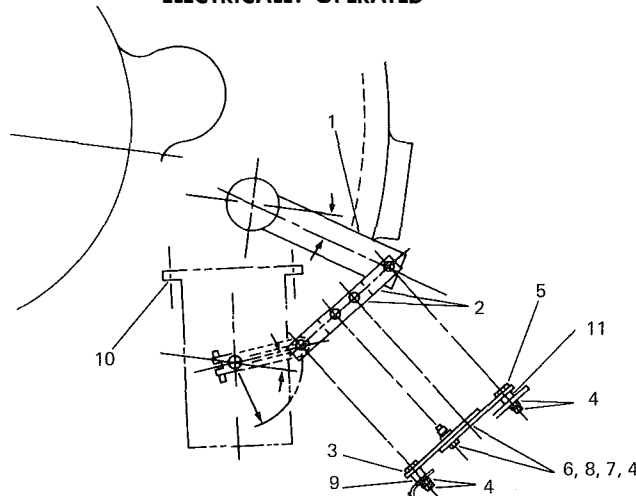


FIG. 9— LINKAGE EXTERNAL PRV – ELECTRICAL OPERATED

| ITEM | PART DESCRIPTION | QUAN. | PART NO. |
|------|----------------------------------|-------|-----------|
| 1 | LEVER, PRV DEVICE | 1 | 364-28236 |
| 2 | LINK, EXT. PRV | 2 | 064-28260 |
| 3 | BOLT SHOULDER | 1 | 064-28286 |
| 4 | NUT, HEX, 1/4-20UNC | 6 | 021-00450 |
| 5 | BOLT SHOULDER | 1 | 064-28282 |
| 6 | SCREW, CAP HEX HD. | 2 | 021-11914 |
| 7 | LOCKWASHER, 1/4 | 2 | 021-05267 |
| 8 | WASHER, PLAIN | 2 | 021-05165 |
| 9 | RING, 5/8 O.D. x 17/64 x 1/2 LG. | 1 | 064-28284 |
| 10 | SCREW, CAP 12 PT. HD. | 3 | 021-11741 |
| 11 | RING, 5/8 OD x 17/64 x 3/8 LG. | 1 | 064-28353 |
| 12 | ARM, CRANK | 1 | 025-17073 |

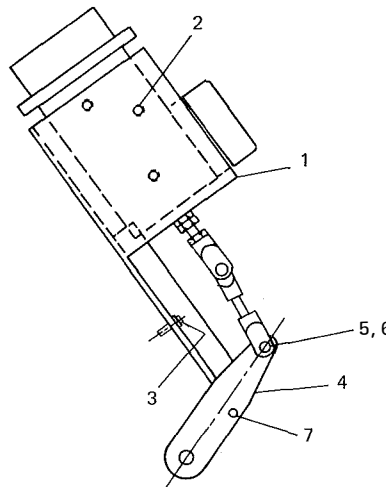


FIG. 10— LINKAGE – EXTERNAL PRV – AIR OPERATED (PNEUMATIC)

| ITEM | PART DESCRIPTION | QUAN. | PART NO. |
|------|-------------------------------|-------|-----------|
| 1 | BRACKET, MOUNTING PRV MOTOR | 1 | 364-16838 |
| 2 | SCREW, CAP, 1/4-20UNC x 5/8 | 3 | 021-01372 |
| 3 | SCREW, CAP, 5/16-18UNC x 3/4 | 4 | 021-11394 |
| 4 | LEVER – PRV DEVICE | 1 | 064-17898 |
| 5 | SCREW, CAP, 1/4-20UNC x 1-1/2 | 1 | 021-02399 |
| 6 | NUT – HEX, 1/4-20UNC | 2 | 021-00450 |
| 7 | PIN, INSERT | 1 | 029-04842 |