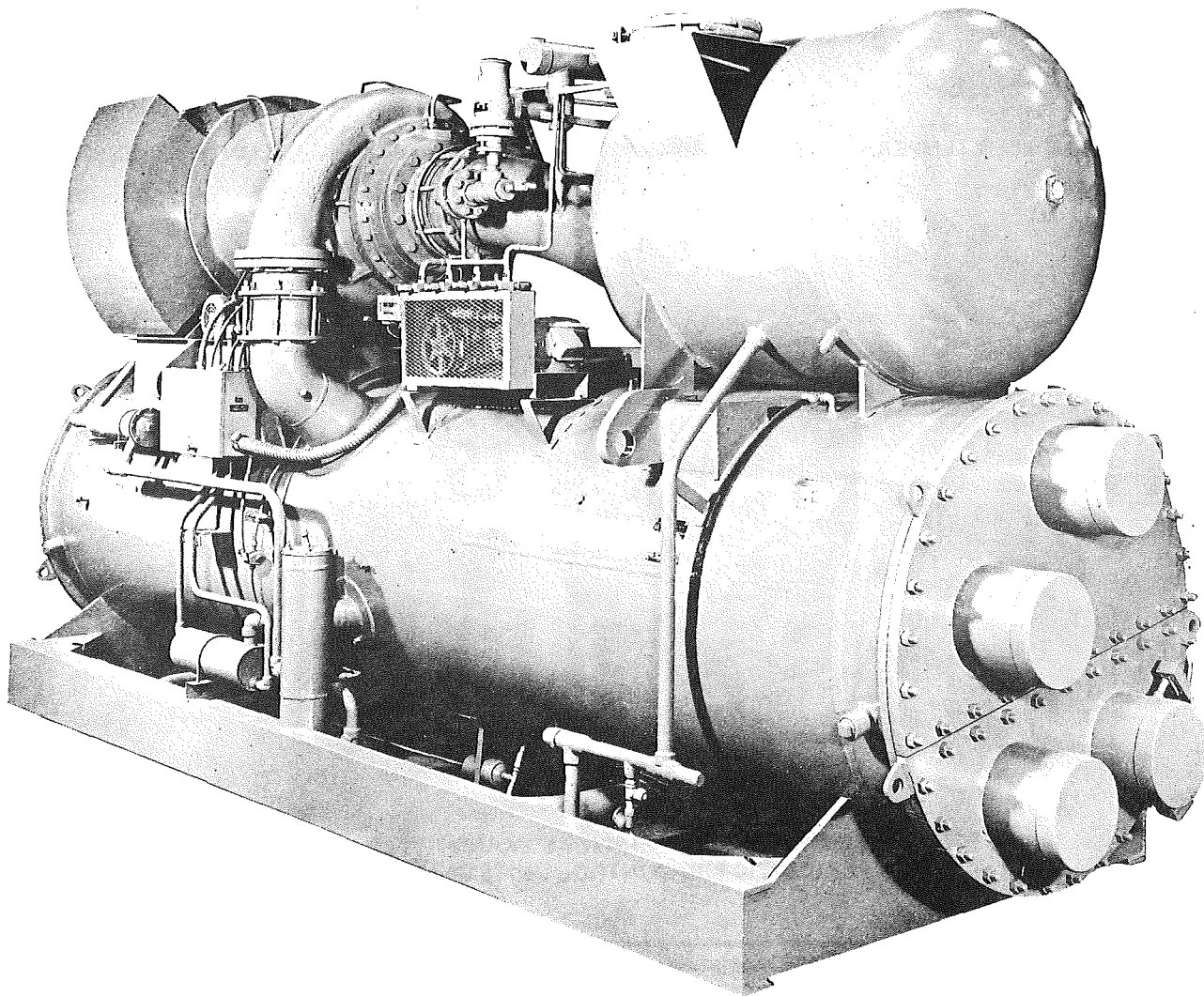


COMPOUNDS AND INSULATION TAPE

| Description | Quan. | Part No. |
|---|-------------|-----------|
| Compound, Heat Conductive (For Thermometer Wells) | 4 Oz. Can | 013-00898 |
| Thermal Insulation Tape – 1/8" X 2" (Insulating Motor Terminals) | 30 Ft. Roll | 025-14931 |


TOUCH-UP PAINTS – SPRAY CANS

| Description | Part No. |
|-----------------------------------|-----------|
| Caribbean Blue Enamel | 013-01835 |
| Fawn Gray Enamel (Control Center) | 013-01836 |



 **YORK**[®]

P.O. Box 1592, York, Pennsylvania USA 17405-1592
 Copyright © by York International Corporation 1993
 Form 160.53-RP1 (293)
 Supersedes: 160.53-RP (Sect. 1) (873)

USA Official Sponsor
 of the 1992
 U.S. Olympic Team

 36USC380

Subject to change without notice. Printed in USA
 ALL RIGHTS RESERVED
 RPC 1M 293 .40
 CODES: SJ & RJM