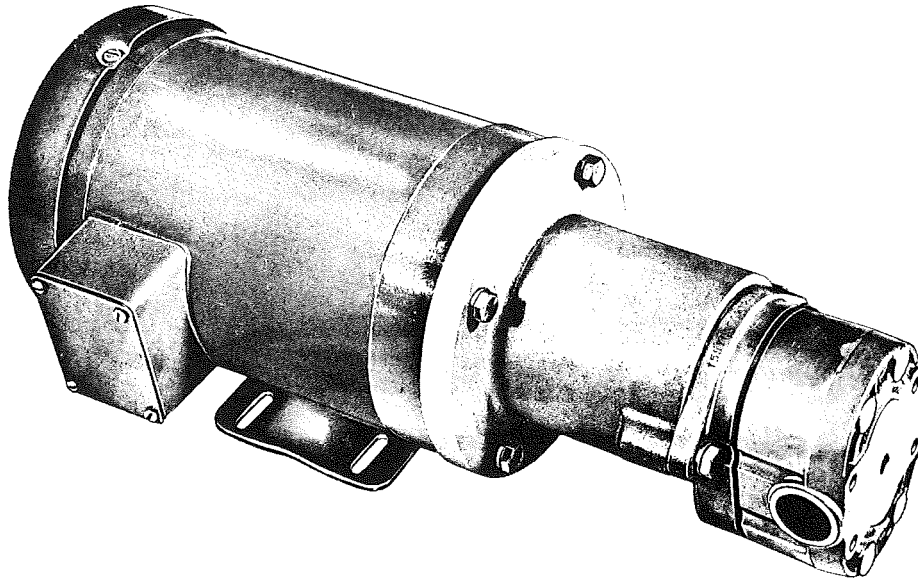


OIL PUMP AND MOTOR ASSEMBLY



Voltage	Part No.
208-3-60	026-16027
220/440, 230/460, 240/480	026-16441
550/575/600-3-60	026-16442
380-3-50	026-17098
415-3-50	026-17099
500-3-50	026-17922

OIL PUMPS

Model	Part No.
3 PH, 60 Hz.	026-17179
3 PH, 50 Hz.	026-17180

SEAL KIT

SEAL KIT (Consists of seal, retainer plate, special seal retainer plate, "O" ring, and three screws.)	026-17178
---	-----------

MOTORS

Voltage	Part No.
230/460-3-60	024-16705
208-3-60	024-16706
575-3-60	024-16707
230/460-3-60 (explosion proof)	024-16708

FIG. 13— OIL PUMP AND MOTOR ASSEMBLY

JUMPER BARS

Compr. Model	Part No.
MKA-65, MKA-73	064-24252

OIL HEATERS

Description	Part No.	Quan.
1500W, 120V	025-17700	1

Note: Special heater, emersion style 2, 2500 watt, 120 volt, used per outdoor installation. Part Number 025-16137.

HIGH OIL TEMP. CONTROL (HOT)

Description	Part No.	Quan.
High Oil Temperature (Hot)	025-15381-003	1
High Discharge Temperature Control (HDTC)	025-15381-002	1