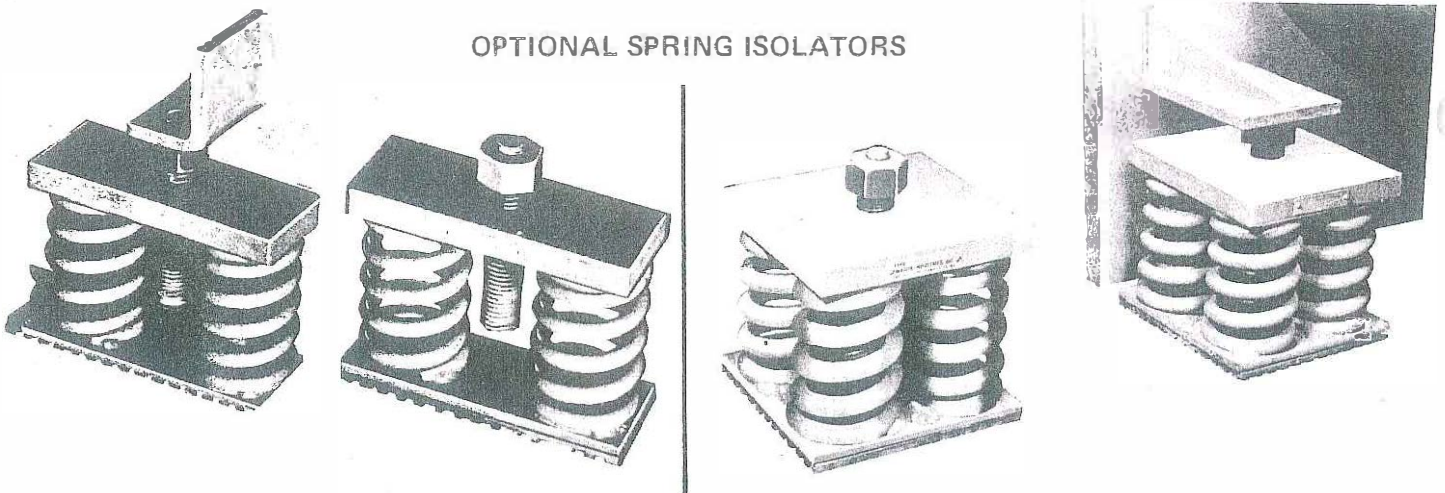


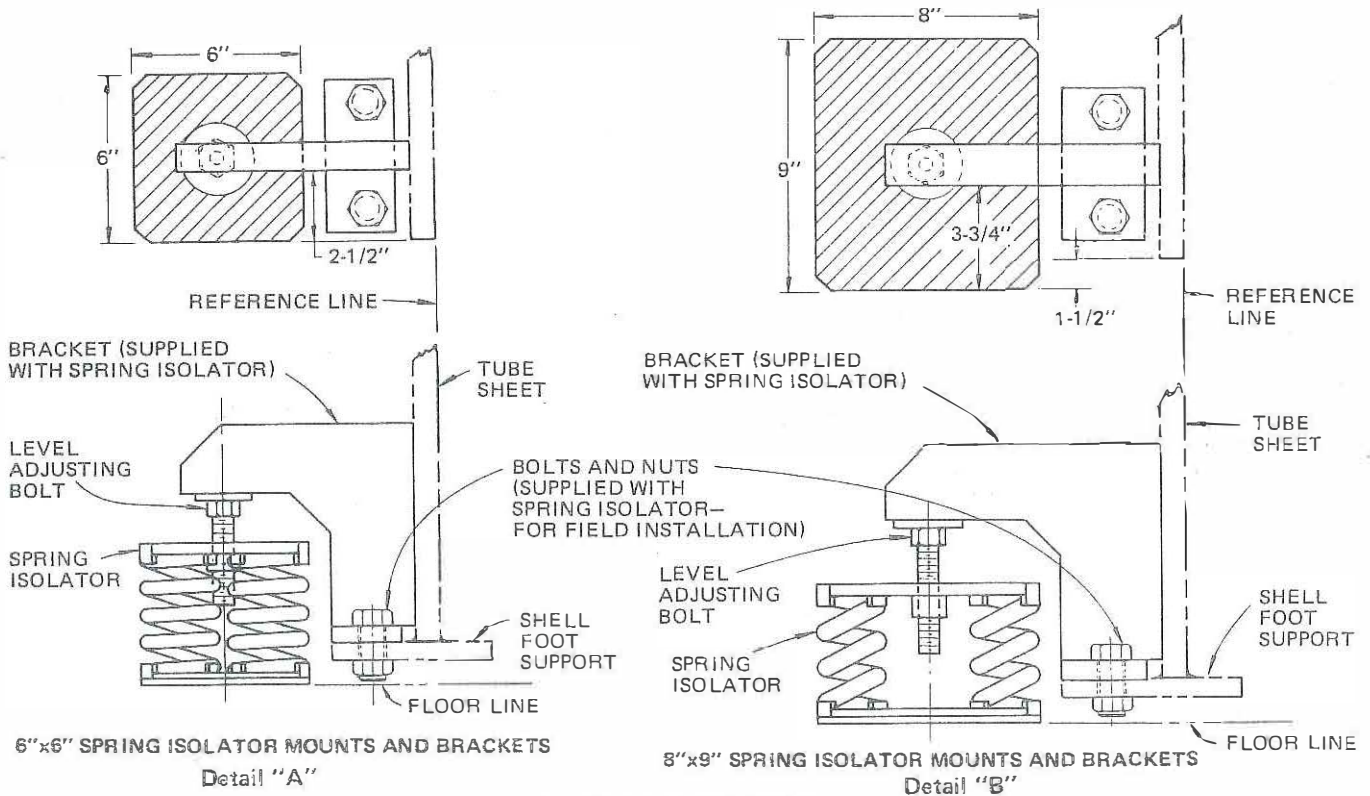
OPTIONAL SPRING ISOLATORS



SPRING ISOLATORS (4 PER UNIT)

SYSTEM OPERATING WT. LBS.	PART NO.
UP TO 8000	029-11412
8001 - 9891	029-11413
9892 - 12182	029-11414
12183 - 15273	029-11415
15274 - 18273	029-11416
18274 - 22909	029-11451
22910 - 24364	029-11579
24365 - 30545	029-10801

FIG. 10 — SPRING ISOLATORS (MODELS HT/OT A1 A1 B1 THRU F3 S3 C2)



SPRING ISOLATORS (4 PER UNIT)

SYSTEM OPERATING WT. LBS.	PART NO.
UP TO 19636 — Detail "A"	029-18113-001
19637 - 24363 — Detail "A"	029-18113-002
24364 - 30545 — Detail "A"	029-18113-003
30546 - 36545 — Detail "B"	029-18114-001
36546 - 45818 — Detail "B"	029-18114-002

FIG. 11 — MODEL YT G1 G1 E1 THRU L3 X3 C3