

COOLER

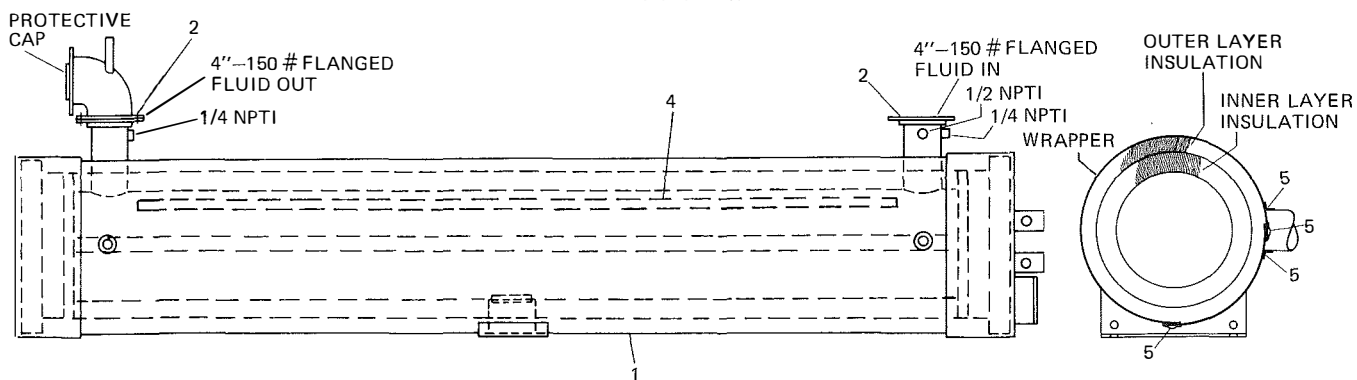


FIG. 6—COOLER

ITEM NO.	DESCRIPTION	FIG. NO.	PART NO.
1	Cooler, Complete Assembly (With Insulation and Metal Wrapper)	6	366-36209
2	Gasket, Asbestos	6	067-57402
3	Gasket, Cooler (Both Ends)	Not Shown	026-19385
4	Heater, Cooler	6	025-17898
5	Sealer, Butyl Tape	6	013-01961
6	Switch, Flow (FLS)	Not Shown	024-15793

ACCESSORY PARTS

ITEM NO.	DESCRIPTION	PART NO.
GAUGE KIT		
1	Kit, Complete (Contains all items listed below)	466-46886T
2	Gauge, Discharge Pressure, 3-1/2" Dia.	026-14366
3	Gauge, Suction Pressure, 3-1/2" Dia.	026-14367
4	Gauge, Oil Pressure, 3-1/2" Dia.	026-18764
	Valve, Stop, 2-Way (Primore 2869)	022-04302

SUBJECT TO CHANGE WITHOUT NOTICE
PRINTED IN U.S.A.

COL 4M 273 .15 Code: S(N) & R(GNP)
Form 150.40-RP4 S(N) & R(GNP) - Int.

DIVISION OF BORG-WARNER CORPORATION
YORK **BORG WARNER**
 P.O. BOX 1592, YORK, PENNSYLVANIA 17405