

### COOLER COMPONENTS

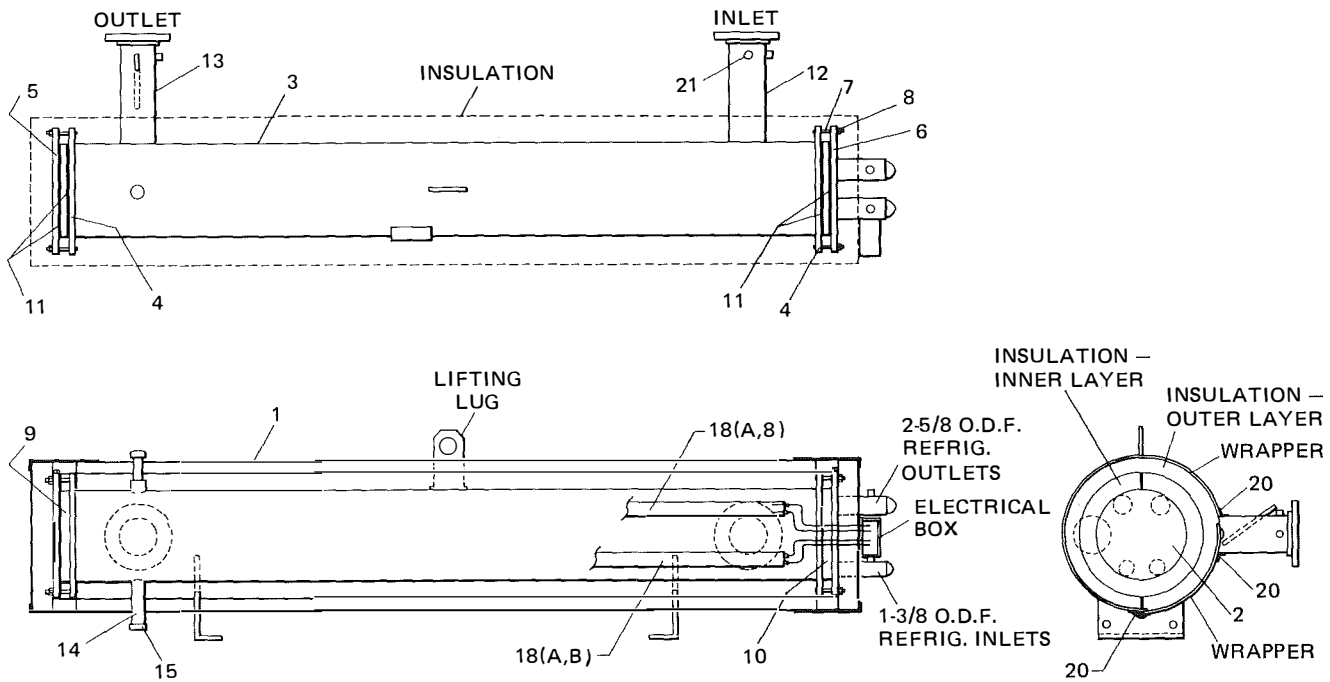


FIG. 2 -- YORK DX COOLER

Item No.	Description	Fig. No.	55	65	85	95
1	Cooler, Complete (heater, insulation, metal wrapper)	2	366-60089	366-60090	366-60091	366-60092
2	Cooler, only	2	366-55609	366-55610	366-55611	366-55612
3	Shell	2	—	—	—	—
4	Head, Tube	2	—	—	—	—
5	Head, Back	2	366-65545	366-55335	366-55335	366-55835
6	Head, Front	2	366-55806	366-55809	366-55809	366-55834
7	Stud	2	021-12734	021-12735	021-12735	021-12736
8	Nut, Hex	2	021-02860	021-02860	021-02860	021-02860
9	Baffle, Pass, Back	2	066-51902	066-51904	066-51904	066-55652
10	Baffle, Pass, Front	2	066-51901	066-51903	066-51093	066-55651
11	Gasket, Pass Baffle	2	066-55653	066-56299	066-56299	066-55654
12	Connection, Water Inlet	2	366-55770	366-55774	366-55778	366-55782
13	Connection, Water Outlet	2	366-60448	366-55773	366-55777	366-55781
14	Connection, Drain, 3/4 pipe	2	066-56327	066-56327	066-56327	066-56327
15	Cap, 3/4 pipe (For Item 14)	2	023-02065	023-02065	023-02065	023-02065
16	Spring, Turbulator	*	066-69904	066-69903	066-69904	066-69904
17	Tube, Copper	*	066-55362	066-55361	066-55362	066-55362
18	Heater, Cooler, 130 Watts	2	—	025-18496	025-18496	—
18A	Heater, Cooler, 210 Watts	2	—	025-17897	025-17897	025-17897
18B	Heater, Cooler, 280 Watts	2	025-17898	—	—	—
19	Heat Conductive Compound, 4 oz. can	*	013-00898	013-00898	013-00898	013-00898
20	Sealer, Butyl Tape (Ft.)	2	013-01961	013-01961	013-01961	013-01961
21	Well, Bulb (Screw-in for TC-6 sensor into water inlet conn.)	2	366-27570	366-27570	366-60109	366-60109

\* Not Shown