

MODELS

LC8, LC8A, LC10, LC10A, LC15, LC15A, LC23, LC23A
 LCH8W, LCH8A, LCH10W, LCH10A, LCH15W, LCH15A, LCH23W, LCH23A

WATER and AIR COOLED MODELS

ITEM NO.	DESCRIPTION	PART NUMBER			
		LC8 LC8A LCH8W LCH8A	LC10 LC10A LCH10W LCH10A	LC15 LC15A LCH15W LCH15A	LC23 LC23A LCH23W LCH23A
1	Compressor—(See Detail "A")	—	—	—	—
2	Condenser Water Cooled Air Cooled (See Detail "B")	462-14382 RA8	462-19925 RA10	462-14382 RA15	462-14382 RC270
3	Evaporator	467-62095	467-62096	467-62095	467-62095
4	Valve, Thermal Expansion	025-11573	025-12773	025-11573	025-11573
5	Valve, Discharge Access Suction Access	022-01627 022-01945	022-01627 022-01627	022-01627 022-01627	022-01627 022-01627
6	Hose, Outlet ¹	362-11907	362-21284	362-20144	362-22021
7	Hose, Inlet: ¹ No. 1 Circuit No. 2 Circuit No. 3 Circuit	362-11906 — —	362-21285 362-21285 —	362-20145 362-22448 —	362-22021 362-22021 362-22021
8	Strainer ²	367-58585	367-58585	367-58588	367-58591
9	Screen Assy. for Item 8	367-58584	367-58584	367-58587	367-58590
10	Dehydrator ³	026-09900	026-09939	026-09900	026-09900
11	Plug, Fusible ¹	023-06559	023-06559	023-06559	023-06559

¹ Water Cooled Condenser Models

² To Be Field Installed At Chilled Liquid Inlet

³ Not Shown—For Air Cooled Condenser Models Only

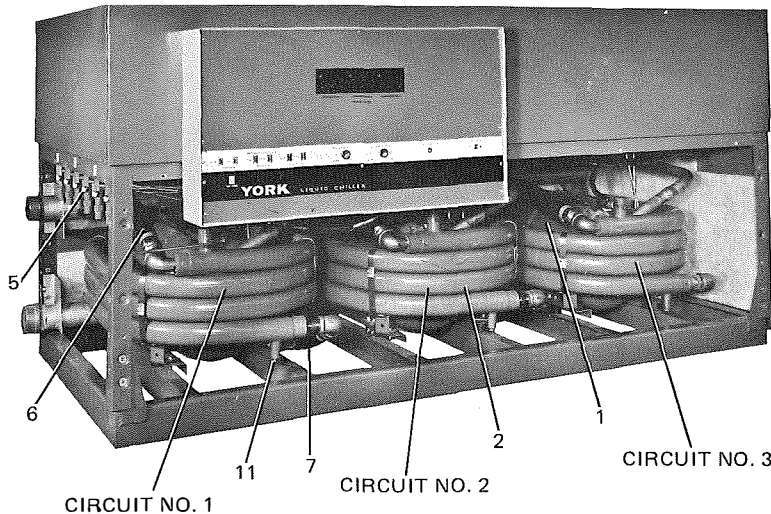


FIG. 1

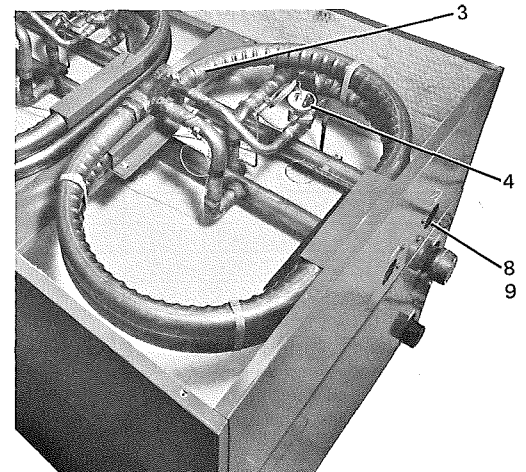


FIG. 2