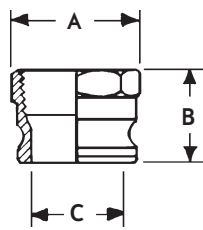


Product Overview | Quick Disconnects

QUICK DISCONNECT CAM AND GROOVE COUPLINGS FOR LIQUID USE ONLY

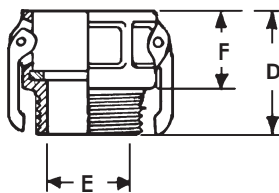
— NOTE: CAM AND GROOVE COUPLINGS ARE NOT DESIGNED FOR COMPRESSED GAS APPLICATIONS

- Allows for quick disconnect of your pipe without the use of tools
- Coupling is constructed from forged brass
- Gasket material is Viton®
- Temperature rating (-20° to 350°) F



ADAPTER Part A

Part number	Pipe size	Adapters Part "A"			Max working pressure (PSIG)
		A	B	C	
R210-3000	1/2	1	1 9/16	9/16	350
R210-3001	3/4	1 3/8	1 17/32	3/4	350
R210-3002	1	1 15/16	2 1/8	1 1/8	350
R210-3003	1 1/4	2 15/16	2 1/8	1 1/8	350
R210-3004	1 1/2	2 9/32	2 3/16	1 3/8	350
R210-3005	2	2 1 1/16	2 7/16	1 25/32	350
R210-3006	2 1/2	3 5/16	2 1 1/16	2 5/32	250
R210-3007	3	3 15/16	2 3/4	2 7/8	250
R210-3008	4	5	3 1/16	3 7/8	100



COUPLER Part B

Part number	Pipe size	Couplers Part "B"			Max working pressure (PSIG)
		D	E	F	
R210-3020	1/2	1 15/16	9/16	1 15/16	350
R210-3021	3/4	2 1/16	3/4	1 3/8	350
R210-3022	1	2 7/16	1	1 9/16	350
R210-3023	1 1/4	2 3/16	1 1/4	2 3/16	350
R210-3024	1 1/2	2 3/4	1 3/8	1 7/8	350
R210-3025	2	3 1/8	2	1 3/16	350
R210-3026	2 1/2	3 1/2	2 3/8	2 1/4	250
R210-3027	3	3 9/16	2 7/8	2 3/8	250
R210-3028	4	4	3 15/16	2 7/16	100