

# Dimensions | Shutoff Valves

## FLANGED VALVE

**1821B flanged** ball valves are constructed out of WCB Carbon Steel or 316 Stainless Steel body and stainless steel ball and stem. They are designed for industrial use on natural gas, LP gas and fuel oil. Their full ports allow for a maximum flow and a minimum pressure drop or turbulence. This valve is CSA and UL approved. The flanged version of the 1821B valve comes standard with a lever operator and a lockable handle. The 1821B-8-FG comes with a gear operator.

### Approvals

- UL Listed
  - MHKZ - Manual valves
  - YQNZ - Compressed gas shut-off valves
  - YRBX - Flammable liquid shut-off valves
  - YSDT - LP gas shut-off valves
- CSA Certified
  - ASME B16.33 (2")
  - ASME B16.38 (3-6")
  - CGA 3.16
- Conforms to ANSI B16.34
- Flange: ANSI B16.5
- Face to Face: ANSI B16.10
- API 607 Fire Safe

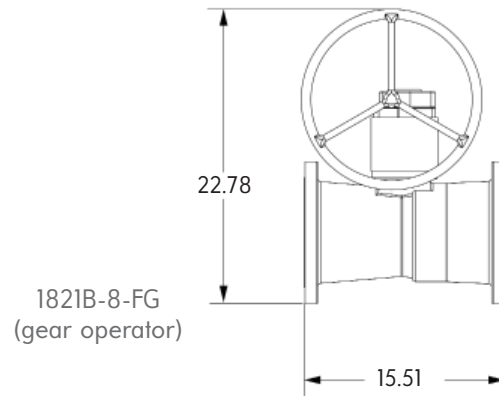
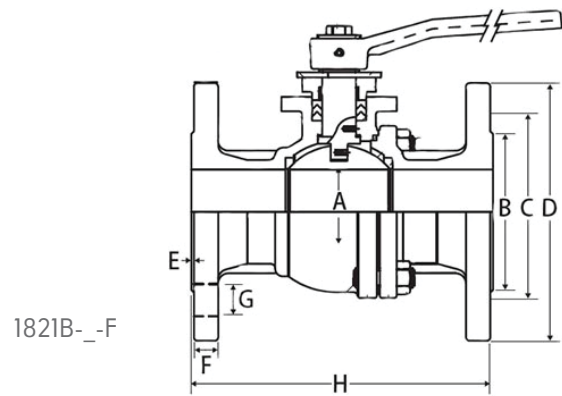


TABLE 4

Part Number	Size	Dimensions (inches)								Bolts	Max PSI	Cv
		A	B	C	D	E	F	G	H			
1821B-4-F 1821B-4-F-SST	2"	1.97	3.62	4.74	5.98	0.06	0.63	0.75	7.01	4	125	486
1821B-5-F 1821B-5-F-SST	2½"	2.56	4.13	5.49	7.01	0.06	0.69	0.75	7.48	4	125	843
1821B-6-F 1821B-6-F-SST	3"	3.15	5.00	6.00	7.48	0.06	0.75	0.75	7.99	4	125	1277
1821B-7-F 1821B-7-F-SST	4"	3.94	6.18	7.50	9.02	0.06	0.94	0.75	9.02	8	125	2055
1821B-8-F 1821B-8-F-SST 1821B-8-FG	6"	5.98	8.50	9.51	10.98	0.06	1.00	0.87	15.51	8	125	4923

DIMENSIONS SHOWN ARE SUBJECT TO CHANGE. PLEASE OBTAIN CERTIFIED PRINTS FROM FIVES NORTH AMERICAN COMBUSITON, INC. IF SPACE LIMITATIONS OR OTHER CONSIDERATIONS MAKE EXACT DIMENSION(S) CRITICAL.