

## OPERATION

### Start-Up

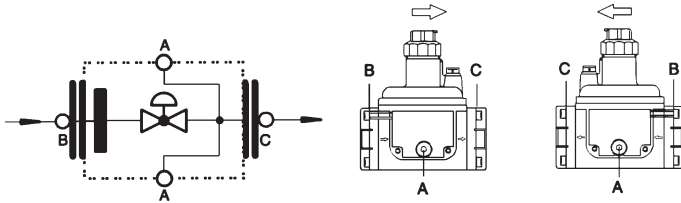
- The inlet and outlet shutoff valves should both be closed.
- Slowly and carefully open the inlet shutoff valve just enough to allow inlet pressure to build up slowly in the regulator until it is fully pressured.

**CAUTION:** During start-up a pressure gauge must be used on the regulator outlet pressure and carefully watched. While inlet pressure builds, outlet pressure must not exceed setpoint by more than 30%. If outlet pressure exceeds setpoint by more than 30%, close the inlet shutoff valve. The regulator is not closing properly. Check and make necessary corrections before proceeding with start-up.

- Slowly open the outlet shutoff valve(s) to allow a small flow. Make sure the flow of gas does not create a hazard.
- With gas flowing, check for correct inlet and outlet pressures.
- Complete start-up by making sure that there are no leaks.

### SetPoint Adjustment

- Remove the black protective cap.



- To increase the outlet pressure setpoint turn the adjustment spindle counterclockwise with a screwdriver.
- To decrease the outlet pressure setpoint turn the adjustment spindle clockwise with a screwdriver.
- Always use an accurate pressure gauge connected downstream from the regulator to measure the actual outlet pressure.
- Screw on protective cap.
- After adjusting the setpoint for normal operation check to see that the gas pressure regulator operates as intended.

### Spring Exchange

- Remove the black protective cap.  
Release spring by turning the adjustment spindle counterclockwise with a screwdriver. Turn the spindle to stop.
- Remove the aluminum cap.
- Remove spring.
- Insert new spring.
- Assemble adjustment spindle and adjust desired outlet pressure. Follow the Setpoint Adjustment instructions.
- Screw on protective cap.
- Stick new label with new outlet pressure range onto the name plate.

## CAPACITY

