

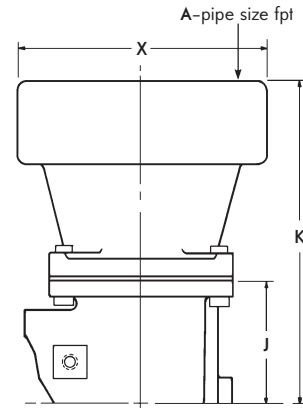
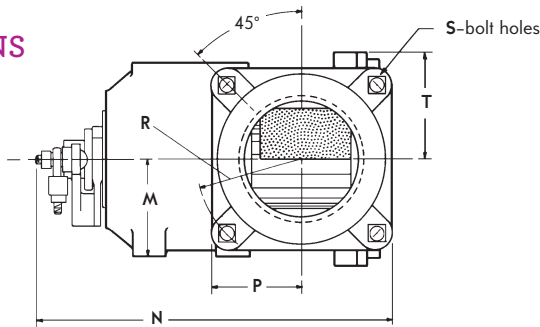
Dimensions | Valve

Valve	MATERIALS		
	body	internals	shaft
1004	cast iron	aluminum	CRS electroless nickel plated
1014	cast iron	cast iron	stainless steel

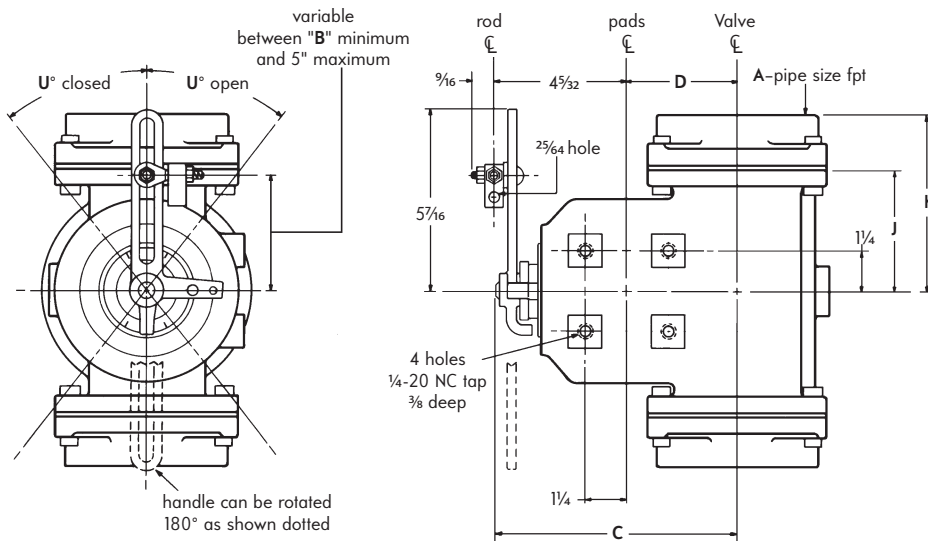
torque requirements
(inch-pounds with 3 psi pressure drop through valve)

Valve size	B	C	D	E	F	G
torque	1.5	4.0	10.0	15.0	20.0	25.0

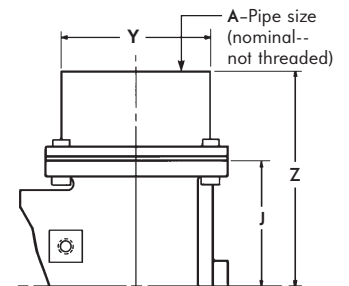
DIMENSIONS inches



flange used on
-8-D Valve



Valves include threaded companion flanges unless suffix "W" is used, which means welding type companion adapter.



welding adapter used on
-9-FW, -10-FW, -10-GW,
-12-GW, and -14-GW Valves

Valve size	dimensions in inches															wt, lb		
	A	B	C	D	J	K	M	N	P	R	T	U°	S	X	Y	Z	1004	1014
-3 or -4-B	1½ or 2	1	4¾	1¼	2¼	3¾	1¾	7½	1½	1¾	¾	37	¾	—	—	—	14	17
-4 or -5-C	2 or 2½	1	5¾	1¾	2¼	3¾	2¾	8¾	2	2¾	¾	36	1½	—	—	—	20	24
-6-C	3	1	5¾	1¾	2¼	4¾	2¾	8¾	2	2¾	¾	36	1½	—	—	—	20	24
-6 or -7-D	3 or 4	1	7¾	3¼	3¼	5¼	2¾	10¾	2¾	3¼	¾	38	1¾	—	—	—	36	43
-8-D	6	1	7¾	3¼	3¼	9¼	2¾	10¾	2¾	3¼	¾	38	1¾	7½	—	—	62	69
-8-E	6	1¾	9¾	5¼	4¾	6¼	3¾	14¾	4¼	4¾	½	38	1¾	—	—	—	75	90
-9-F or -FW	8	1¾	13½	9½	7	8¾	5¾	19¾	5¾	6¾	½	40	1	—	8¾	10¾	165	200
-10-FW	10	1¾	13½	9½	7	—	5¾	19¾	5¾	6¾	½	40	1	—	10¾	10¾	333	383
-10-GW*	10	1¾	19¾	15¾	9¾	—	8¼	27¾	7¾	8¾	½	40	1½	—	10¾	14¾	410	—
-12-GW*	12	1¾	19¾	15¾	9¾	—	8¼	27¾	7¾	8¾	½	40	1½	—	12¾	14¾	410	—
-14-GW*	14	1¾	19¾	15¾	9¾	—	8¼	27¾	7¾	8¾	½	40	1½	—	14	14¾	490	—

* 1004 ONLY