

Dimensions | Gas Ratio Regulators

Minimum Ambient Temperature: -20°F (standard and -V)

Low Fire Accuracy at <3" w.c. impulse:

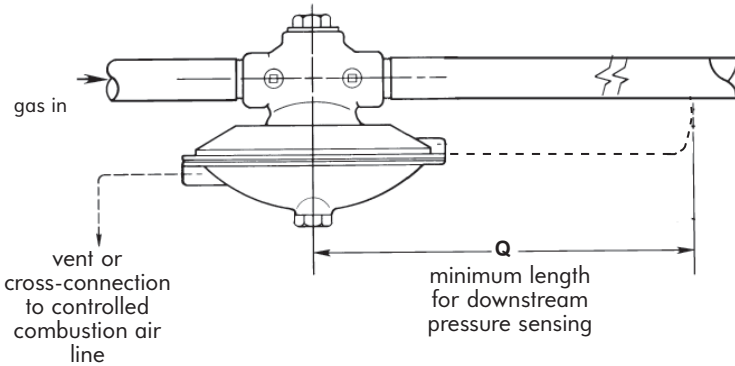
Spring bias setting capabilities: -0.2" w.c. to +1.7" w.c.
Repeatability: ±0.05" w.c.

High Fire Accuracy at 3" to 41.5" w.c. impulse:

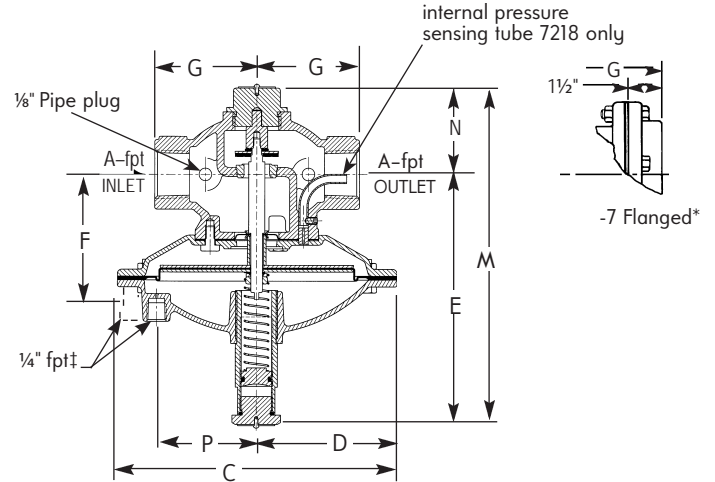
Impulse/outlet pressure offset: 0.5 to 5%
Repeatability: ±0.3" w.c.

Turndown: Exceeds 20:1

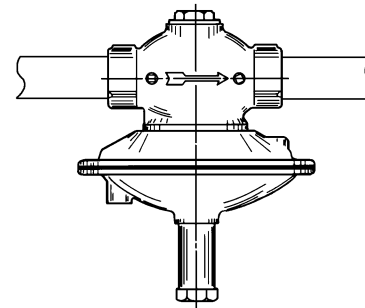
FIELD PIPING FOR 7219A REGULATOR



7218/7219A REGULATOR



Install 7218/7219A Regulators with diaphragm horizontal and below the pipe.



Regulator designation	dimension in inches										wt, lb
	A	C	D	E	F	G	M	N	P	Q	
7218-01, 7219A-01	1/2	7 1/2	3 3/4	6 7/8	—	2 1/2	9 1/8	2 1/4	2 11/16	6 5/8	7.5
7218-0, 7219A-0	3/4	7 1/2	3 3/4	6 7/8	—	2 1/2	9 1/8	2 1/4	2 11/16	6 5/8	7.5
7218-1, 7219A-1	1	7 1/2	3 3/4	6 7/8	—	2 3/4	9 5/16	2 7/16	2 11/16	8 7/8	8
7218-2, 7219A-2	1 1/4	10 1/2	5 1/4	5 29/32	—	2 3/4	8 29/32	3	3 15/16	9 1/4	12
7218-3, 7219A-3	1 1/2	10 1/2	5 1/4	5 29/32	—	3 1/16	9 1/32	3 1/8	3 15/16	11 3/8	13
7218-4, 7219A-4	2	13 1/2	6 3/4	7 3/16	—	3 5/16	10 9/16	3 3/8	5 1/4	13 1/2	17
7218-5, 7219A-5	2 1/2	18 1/2	9 1/4	11 25/32	6 7/16	4 1/2	15 25/32	4	—	17	38
7218-6, 7219A-6	3	18 1/2	9 1/4	11 25/32	6 7/16	4 13/16	16 9/32	4 1/2	—	20 1/4	40
7218-7*, 7219A-7*	4	18 1/2	9 1/4	12 9/32	7 1/8	8 21/32	18 1/32	5 3/4	—	24	84

* Threaded companion flanges included.

† For proper size impulse pipe, see paragraph A7 on Instructions 7218-2.