

## 7216/7218/7219A/7349A Regulators Repair and Upgrade Kits

Sheet 7216/7218/7219A/7349A  
Reference Sheet 7000-8 for more information

REPAIR KITS (for new style regulators)	
7216/7218/7219A/7349A-01-RK	
-0-RK	
-1-RK	
-2-RK	
-3-RK	
-4-RK	
-5-RK	
-6-RK	
-7-RK	

UPGRADE KITS (for old style regulators)	
7216/7218/7219A/7349A-01-RK	-0 thru -4 same as repair kit
-0-RK	
-1-RK	
-2-RK	
-3-RK	
-4-RK	
7216/7218/7219A/7349A-5-UK	
-6-UK	
-7-UK	

Repair Kits (RK) are used to upgrade -01\* through -4 size regulators from the old, "flat" diaphragm style regulator to the new, "molded" diaphragm style regulator, as well as to repair "molded" diaphragm style regulators. Note that for -5 through -7 sizes, a Repair Kit is used to repair only a "molded" diaphragm style regulator. An Upgrade Kit (UK) is required for the -5 through -7 sizes to change from a "flat" diaphragm style regulator to a "molded" diaphragm style regulator because the Upgrade Kit includes a necessary new gas diaphragm cover (see Figure 1). *If style of regulator is not known, order a -UK for -5, -6, and -7 sizes to assure all required parts are supplied. For Viton regulator repair kits, use -VRK or -VUK suffix.*

**CAUTION:** The molded type diaphragm cannot directly replace an existing flat type diaphragm and gasket unless installed with a complete Upgrade Kit. Regulators will not function with this molded diaphragm if internal parts are from the flat diaphragm style regulator. Internal parts must be from an existing molded diaphragm style regulator or must be rebuilt with the components found in an Upgrade Kit for the regulator to operate properly.

**WARNING:** Gas must be turned off and locked out before servicing regulator or any gas component.

### REPAIR and UPGRADE KIT INSTRUCTIONS

Note that loose parts are not available and a repair or upgrade kit must be purchased to repair or upgrade a regulator.

### DISASSEMBLY:

Regulator need not be removed from pipeline to repair/upgrade.

**Step One A (7216 only):** Remove spring cartridge cap (1) and insert a 1/4"-20UNC bolt into the spring eye (2). Pull the spring eye (2) and washer (3) from the spring cartridge (4) and disconnect from the spring (5). Carefully detach the gas diaphragm cover (8) and spring (5) from the gas diaphragm case

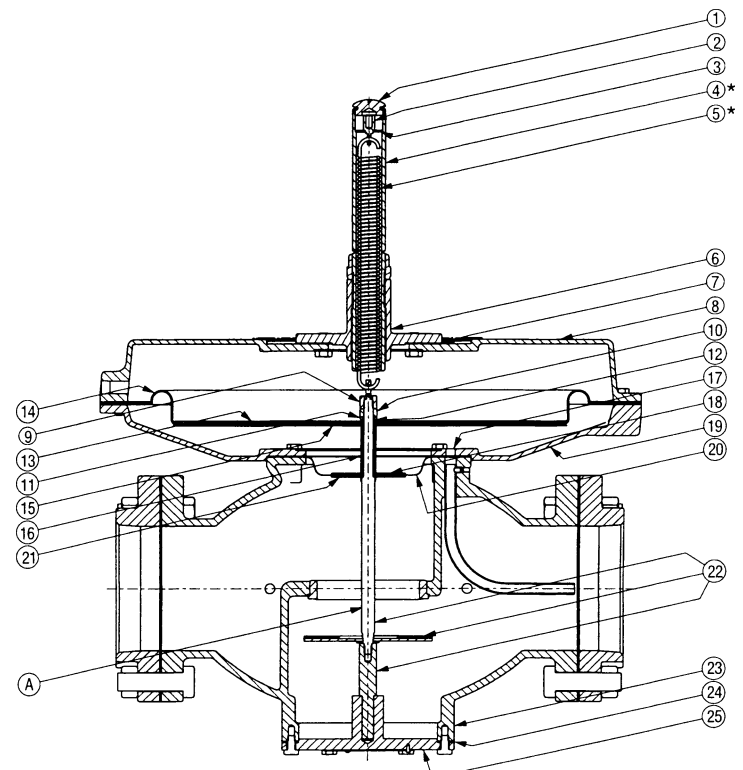


Figure 1. New diaphragm cover shown. Typical for 7216 and 7218-5, -6, and -7 only. See pages 3 and 4 for 7218 and 7216 replacement parts.

\* The -01(1/2") size was introduced into the product line in August 2000, and exists only in a "molded" diaphragm style.