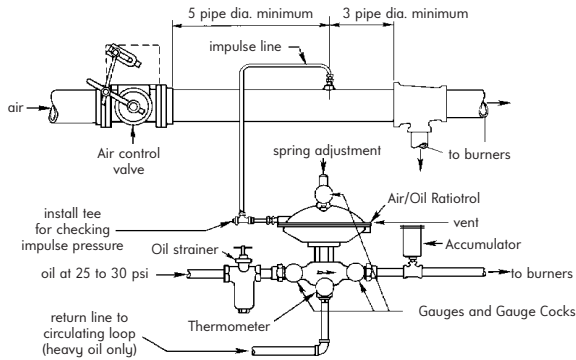
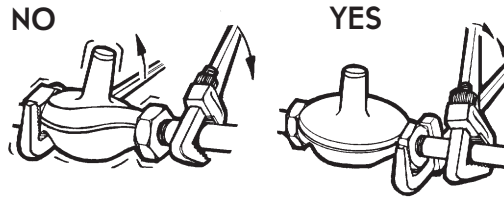
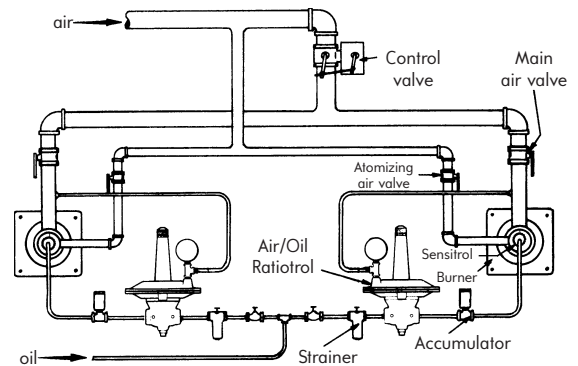


# Dimensions | Air/Oil Ratiotrols

When installing North American 7052 equipment please follow the diagram to the right.

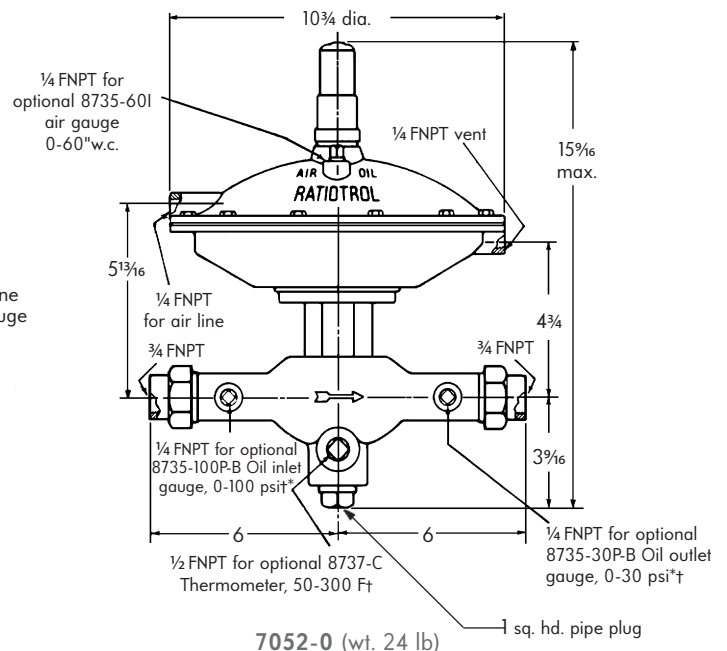
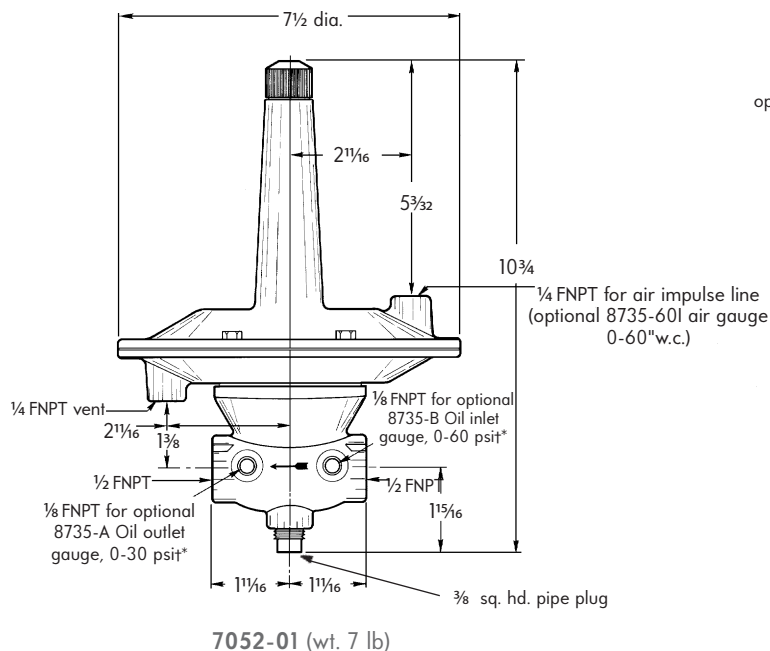


**Figure 1.** Piping of Ratiotrol used for several burners on light or heavy oil, or single burner on heavy oil.



**Figure 2.** Arrangement for burning light oil with a separate Ratiotrol for each burner.

## DIMENSIONS inches



Ratiotrols™ must be mounted horizontally, and diaphragm case should be above the pipe.

See photograph on front for actual vent and impulse locations.  
Thermometer and gauges not standard equipment.

† On both sides of body.

\* Gauges shall be isolated from pulsation damage during operation of the burner system with the use of 1836-04 gauge cocks on -01 and 1836-03 on -0 size.

DIMENSIONS SHOWN ARE SUBJECT TO CHANGE. PLEASE OBTAIN CERTIFIED PRINTS FROM FIVES NORTH AMERICAN COMBUSTION, INC.  
IF SPACE LIMITATIONS OR OTHER CONSIDERATIONS MAKE EXACT DIMENSION(S) CRITICAL.