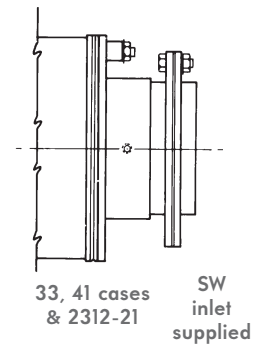
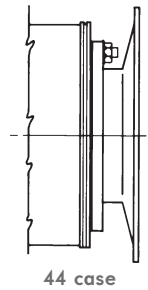
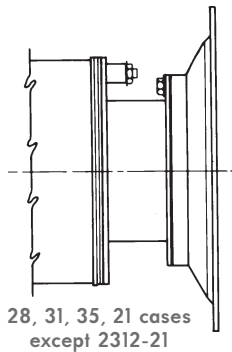


Blower designation	Filter designation ^④	dimensions in inches			approximate weight in lb ^②
		E ^①	N ^③	R	
23165-35/2-__7.5D	2923-14-35A	28	8	14 ⁵ / ₈	57
23165-35/2-__10D	2923-14-35A	28	8	14 ⁵ / ₈	57
23165-21/1-__15D	2923-18-21A	28 ³ / ₈	10	18 ⁵ / ₈	94
23165-33/1-__20D	2923-22-33A	34 ¹ / ₂	12	22 ⁵ / ₈	147
23165-33/1-__25D	2923-22.5-33A	40 ¹ / ₂	12	22 ⁵ / ₈	205
23165-33/1-__30D	2923-30-33A	42 ¹ / ₂	12	30 ⁵ / ₈	260
2322-19/3-__3D	2923-8-19B	22 ³ / ₄	4	8 ⁵ / ₈	16
2322-19/3-__5D	2923-8-19B	22 ³ / ₄	4	8 ⁵ / ₈	16
2322-28/2-__7.5D	2923-14-28A	29 ¹ / ₂	8	14 ⁵ / ₈	57
2322-28/2-__10D	2923-14-28A	29 ¹ / ₂	8	14 ⁵ / ₈	5
2322-21/2-__15D	2923-18-21A	33 ⁷ / ₈	10	18 ⁵ / ₈	94
2322-21/2-__20D	2923-18-21A	33 ⁷ / ₈	10	18 ⁵ / ₈	94
2322-21/2-__25D	2923-18-21A	33 ⁷ / ₈	10	18 ⁵ / ₈	94
2322-21/2-__30D	2923-22-21A	37 ⁷ / ₈	10	22 ⁵ / ₈	115
2322-33/2-__30D	2923-22-33A	46 ⁷ / ₈	12	22 ⁵ / ₈	147
2322-33/2-__40D	2923-30-33A	48 ⁷ / ₈	12	30 ⁵ / ₈	260
23305-21/2-__20D	2923-18-21A	33 ⁷ / ₈	10	18 ⁵ / ₈	94
23305-21/2-__25D	2923-18-21A	33 ⁷ / ₈	10	18 ⁵ / ₈	94
23305-21/2-__30D	2923-18-21A	33 ⁷ / ₈	10	18 ⁵ / ₈	94



- ① When installing blower, allow sufficient space beyond filter for removal for cleaning.
- ② Approximate weight, includes filter and flange.
- ③ Nominal pipe size of filter-adapter (6" size and smaller are threaded).
- ④ When ordering complete filter, add a suffix: W for the oil-wetted metal screen filter, or T for the paper (throwaway) model.

To order, specify: complete filter designation for (specify blower designation).

Example: 2923-10-24AW Filter for 23055-24/1-T1.5D Blower

DIMENSIONS SHOWN ARE SUBJECT TO CHANGE. PLEASE OBTAIN CERTIFIED PRINTS FROM FIVES NORTH AMERICAN COMBUSTION, INC.
IF SPACE LIMITATIONS OR OTHER CONSIDERATIONS MAKE EXACT DIMENSION(S) CRITICAL.

WARNING: Situations dangerous to personnel and property may exist with the operation and maintenance of any combustion equipment. The presence of fuels, oxidants, hot and cold combustion products, hot surfaces, electrical power in control and ignition circuits, etc., are inherent with any combustion application. Components in combustion systems may exceed 160°F (71°C) surface temperatures and present hot surface contact hazard. Fives North American Combustion, Inc. suggests the use of combustion systems that are in compliance with all Safety Codes, Standards, Regulations and Directives; and care in operation.

CONTACT

fna.sales@fivesgroup.com
T +1 800 626 3477 - F +1 216 373 4237

Fives North American Combustion, Inc.
4455 East 71st Street - Cleveland, OH 44105 - USA
www.fivesgroup.com



fives
Industry can do it