

Inlet and Discharge Adapters for 2300 Turbo Blowers

SW Inlet Adapter. Figure 1 shows an SW Inlet Adapter. An SW style inlet is used with a 2947 Blower Sleeve or for a welded pipe connection.

Threaded Inlet Adapter. Figure 2 shows a Threaded Inlet Adapter, for 3" through 6" pipe size inlets.

Discharge Connection. Blowers with 8" and larger discharge utilize SW unthreaded adapter suitable for slip-on or welded connection. Blowers with 6" discharge and smaller use cast threaded flanges, but an SW discharge can be specified.

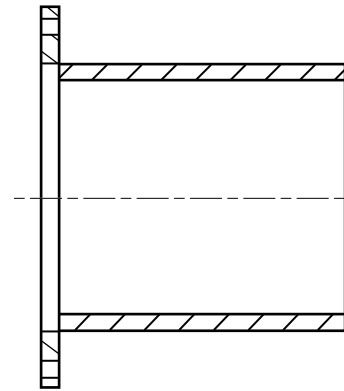


Figure 1

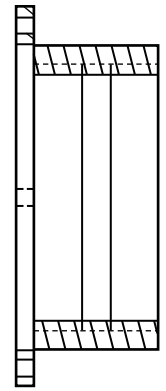


Figure 2

Sheet 2300-6

Blower	Nominal pipe size in inches		SW Inlet, Gasket and Hardware Assembly	Threaded Inlet, Gasket and Hardware Assembly	Inlet Guard and Hardware Assembly	SW Outlet, Gasket and Hardware Assembly	Threaded Outlet, Gasket and Hardware Assembly
	Inlet	Outlet					
2304-11/1-_3	3	2	1-5201-1	1-5207-1	1-5200-1	1-5204-1	1-5203-1
2304-44/1-_10	16	18	1-5201-12		1-5200-10	1-5202-12	
2308-11/3-_5	3	2	1-5201-2	1-5207-2	1-5200-2	1-5204-1	1-5203-1
2308-14/1-_5	3	3	1-5201-3	1-5207-3	1-5200-3	1-5204-2	1-5203-2
2308-14/1-_75	3	3	1-5201-3	1-5207-3	1-5200-3	1-5204-2	1-5203-2
2308-14/1-_1	3	3	1-5201-3	1-5207-3	1-5200-3	1-5204-2	1-5203-2
2308-17/1-_1	3	4	1-5201-3	1-5207-3	1-5200-3	1-5204-3	1-5203-3
2308-17/1-_1.5	4	6	1-5201-4	1-5207-4	1-5200-3	1-5206-1	1-5203-4
2308-24/1-_2	6	6	1-5201-8	1-5208-1	1-5200-8	1-5204-5	1-5203-5
2308-24/1-_3	6	8	1-5201-8	1-5208-1	1-5200-8	1-5202-4	
2308-31/1-_5	8	10	1-5201-9		1-5200-7	1-5202-5	
2308-31/1-_7.5	8	10	1-5201-9		1-5200-7	1-5202-5	
2308-21/1-_10	10	12	1-5201-5		1-5200-6	1-5202-1	
2308-44/1-_10	16	16	1-5201-12		1-5200-10	1-5202-11	
2308-44/1-_15	16	16	1-5201-12		1-5200-10	1-5202-11	
2308-44/1-_20	16	18	1-5201-12		1-5200-10	1-5202-12	
2308-44/1-_25	16	18	1-5201-12		1-5200-10	1-5202-12	
2308-44/1-_30	16	18	1-5201-12		1-5200-10	1-5202-12	
2308-47/1-_40	24	24	1-5201-13		1-5200-11	1-5202-14	
2308-47/1-_50	24	24	1-5201-13		1-5200-11	1-5202-14	
2310-11/4-_5	3	2	1-5201-2	1-5207-2	1-5200-2	1-5204-1	1-5203-1
2310-19/1-_75	3	3	1-5201-3	1-5207-3	1-5200-3	1-5204-4	1-5205-1
2310-19/1-_1	3	4	1-5201-3	1-5207-3	1-5200-3	1-5204-3	1-5203-3
2310-19/1-_1.5	4	6	1-5201-4	1-5207-4	1-5200-3	1-5206-1	1-5203-4
2310-19/1-_2	4	6	1-5201-4	1-5207-4	1-5200-3	1-5206-1	1-5203-4
2310-26/1-_3	6	6	1-5201-8	1-5208-1	1-5200-8	1-5204-5	1-5203-5