

Capacity, Dimensions | 6796 Magna-Flame™

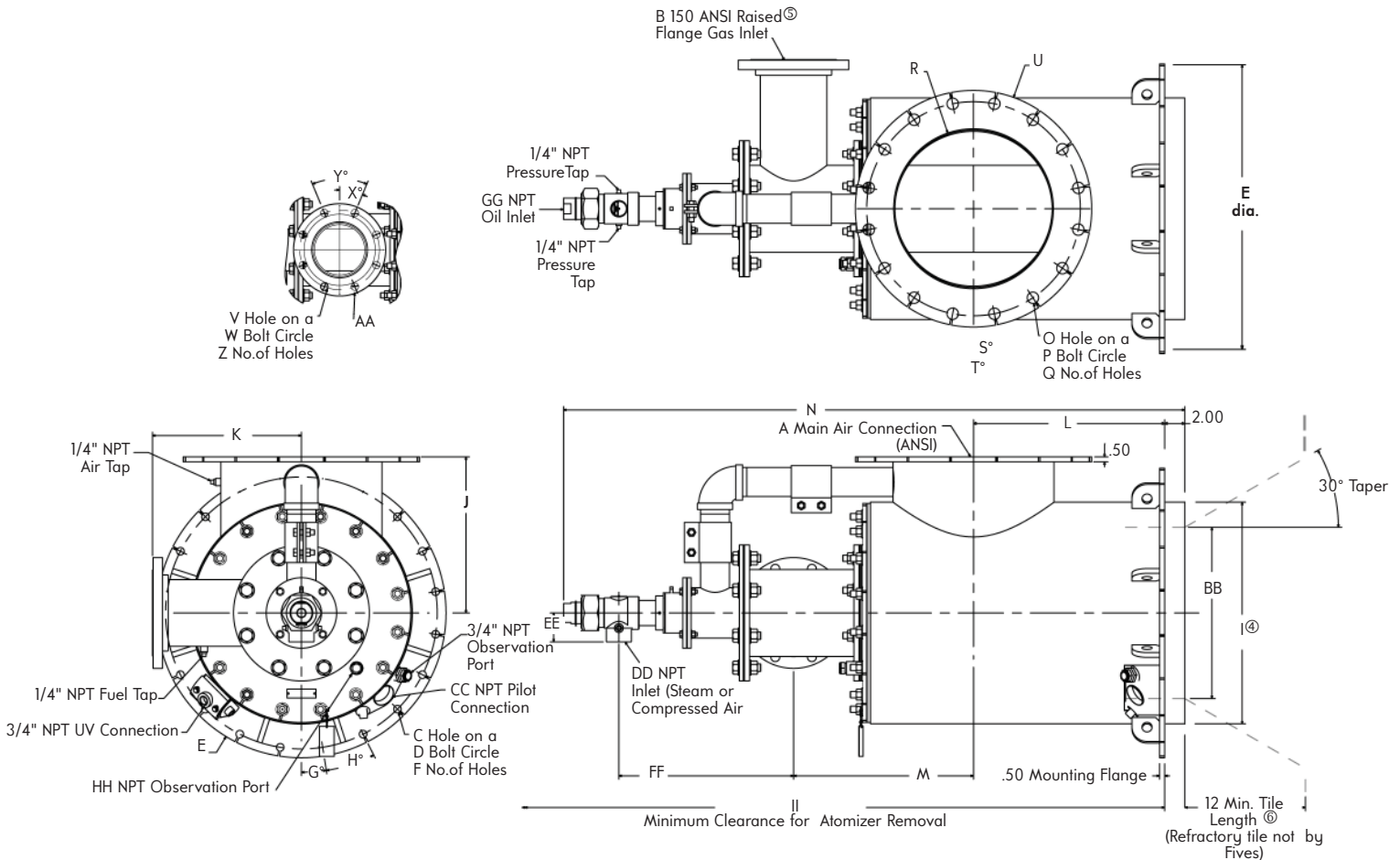
Burner designation	COMBUSTION AIR CAPACITY, (scfh) For Btu/hr, multiply by 100				FLOW RATE of ATOMIZING MEDIUM For sizing piping only		FLAME DIMENSIONS @ 8 osi main air and 10% XSair Add 10% for heavy oil	
	Air pressure drop across burner, osi				"Maximum" ^③ steam flow, lb/hr with 80 psi steam	"Maximum" ^③ compr. air, scfm with 80 psi air	Length	Diameter
	1.0	5.0	6.0	8.0 ^②				
6796-12-46	67 000	150 000	164 000	190 000	300	111	6'	5'
6796-14-46	86 000	193 000	211 000	244 000	425	157	7'	6'
6796-16-46	120 000	269 000	295 000	340 000	550	204	7 ½'	6'
6796-18-46	155 000	346 000	380 000	438 000	700	260	8'	6'
6796-20-46	200 000	447 000	490 000	565 000	900	333	9'	7'
6796-22-46	237 000	530 000	580 000	670 000	1100	407	9 ½'	8'
6796-24-46	282 000	630 000	690 000	795 000	1300	480	10'	8'

① Because of a positive pressure in the burner, it is difficult to light with a torch unless the air is turned very low and a strong pressure torch is used.

② Maximum recommended pressure

③ See explanation in the text under "Atomizer".

DIMENSIONS



DIMENSIONS SHOWN ARE SUBJECT TO CHANGE. PLEASE OBTAIN CERTIFIED PRINTS FROM FIVES NORTH AMERICAN COMBUSTION, INC. IF SPACE LIMITATIONS OR OTHER CONSIDERATIONS MAKE EXACT DIMENSION(S) CRITICAL.