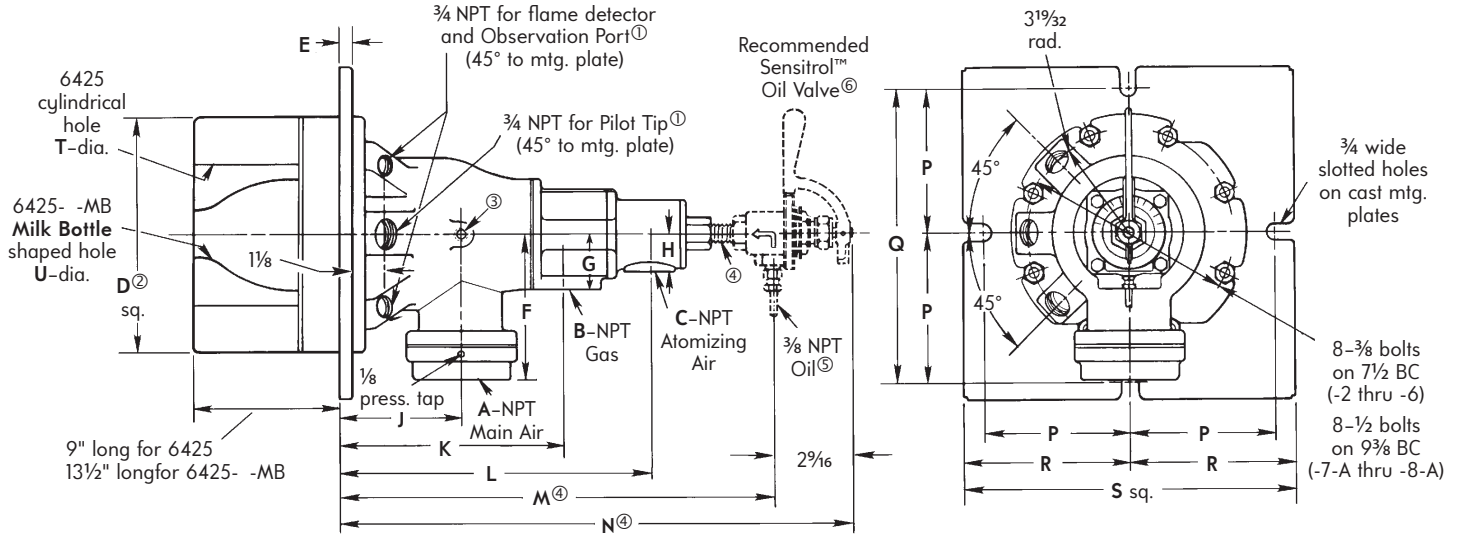


Dimensions | Dual-Fuel™ Burners

DIMENSIONS inches



NOTE: For 6425-8-A, the air and gas connections cannot be piped in the same plane, as shown on other side, because the "flower pot" type air connection flange would interfere with the 2 1/2" gas line.

DIMENSIONS SHOWN ARE SUBJECT TO CHANGE. PLEASE OBTAIN CERTIFIED PRINTS FROM FIVES NORTH AMERICAN COMBUSTION, INC. IF SPACE LIMITATIONS OR OTHER CONSIDERATIONS MAKE EXACT DIMENSION(S) CRITICAL.

Burner designation	A	B	C	D ^③	E	F	G	H	J	K	L	M ^⑤	N ^⑤
6425-2	1 1/4	1	3/4	8 1/2	1/2	5 1/4	2	1 3/8	4 3/8	8 3/8	11 5/16	15 13/16	18 3/8
6425-3	1 1/2	1	3/4	8 1/2	1/2	5 1/4	2	1 3/8	4 3/8	8 3/8	11 5/16	15 13/16	18 3/8
6425-4	2	1 1/4	3/4	8 1/2	1/2	5 1/4	2	1 3/8	4 3/8	8 3/8	11 5/16	15 13/16	18 3/8
6425-5	2 1/2	1 1/2	1	8 1/2	1/2	5 1/4	2	1 3/8	4 3/8	8 3/8	11 5/16	15 13/16	18 3/8
6425-6	3	1 1/2	1	8 1/2	1/2	5 9/16	2	1 3/8	4 3/8	8 3/8	11 5/16	15 13/16	18 3/8
6425-7-A	4	2 1/2	1 1/4	10	9/16	6 15/16	2 5/8	2 1/8	5 7/8	11	15 1/8	20 1/16	22 5/8
6425-7-B	4	2 1/2	1 1/4	10	9/16	6 15/16	2 5/8	2 1/8	5 7/8	11	15 1/8	20 1/16	22 5/8
6425-8-A	6	2 1/2	2	10	9/16	10 11/16	2 5/8	1 3/4	5 7/8	11	15 1/8	20 1/16	22 5/8

Burner designation	P	Q	R	S	T	U	wt, in lb	Recommended Sensitrol™ Oil Valve	approx. flame lengths* with 16 psi Main Air (in open furnace)	
									gas	oil
6425-2	5 1/4	10 1/2	6	12	5	3	83	1813-02-A	1/2'	1 1/2'
6425-3	5 1/4	10 1/2	6	12	5	3	83	1813-02-A	1 1/2'	2'
6425-4	5 1/4	10 1/2	6	12	5	3	83	1813-02-A	2'	2 1/2'
6425-5	5 1/4	10 1/2	6	12	5	3	83	1813-02-A	2 1/2'	3'
6425-6	5 1/4	10 1/2	6	12	5	3	83	1813-02-B	3'	4'
6425-7-A	6 1/8	12 1/4	6 3/4	13 1/2	7	4 1/2	139	1813-02-C	5'	6'
6425-7-B	6 1/8	12 1/4	6 3/4	13 1/2	7	4 1/2	139	1813-02-C	6'	6'
6425-8-A	6 1/8	12 1/4	6 3/4	13 1/2	7	-	145	1813-02-D	7'	7'

All burners use 4011-11 or 4011-12 Pilot Tips.
6425- -MB Burners have a 1/16" gasket between mounting plate and burner body.

* 6425 Burners with standard tiles

- ① Pilot, flame detector, and Observation Port positions are interchangeable as long as Pilot and flame detector are in adjacent holes.
- ② Opening in furnace shell should be about 1/2" larger than dimension D to allow for fillets and draft on mounting plate.
- ③ 1/4" air pressure tap on -2, -3, -4, -5 and -6.
- ④ Dimensions M and N assume use of a 3/8" close nipple (not furnished by North American) between burner and Sensitrol™ Valve.
- ⑤ Metal tubing is available as an extra cost option (order as PN 3-0310-7).
- ⑥ Optional (recommended) Sensitrol Oil Valve is not included as part of the burner assembly, and must be ordered separately.

Tiles for 6425 Burners

Burner designation	Standard 70% alumina PN	Milk Bottle 80% alumina PN
6425-2 thru -6	4-2121-2	OC4-2332-1
6425-7A, -7B, -8A	4-2142-2	OC4-2547-2

All tiles end use limit temperature is 3200°F.