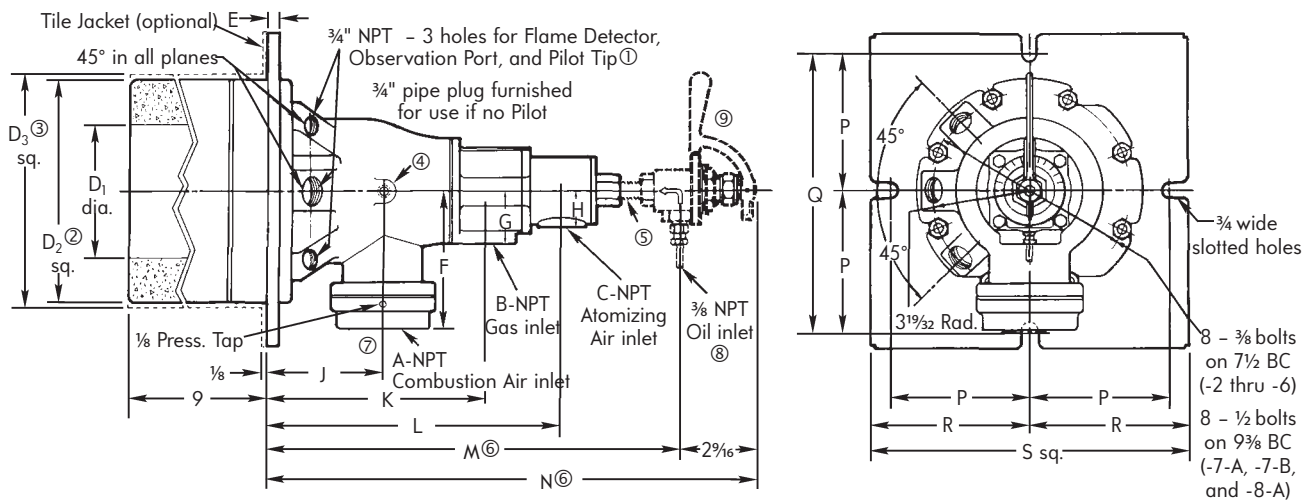


North American Fire•All™ Dual-Fuel™ Burners

Dimensions 6422

DIMENSIONS in inches



DIMENSIONS SHOWN ARE SUBJECT TO CHANGE. PLEASE OBTAIN CERTIFIED PRINTS FROM FIVES NORTH AMERICAN COMBUSTION, INC. IF SPACE LIMITATIONS OR OTHER CONSIDERATIONS MAKE EXACT DIMENSION(S) CRITICAL.

Burner designation	dimensions in inches																		
	A	B	C	D ₁	D ₂ ^②	D ₃ ^③	E	F	G	H	J	K	L	M ^⑥	N ^⑥	P	Q	R	S
6422-2	1 1/4	1	3/4	5	8 1/2	9 1/2	1/2	5 1/4	2	1 3/8	4 3/8	8 3/8	11 5/16	15 13/16	18 3/8	5 1/4	10 1/2	6	12
6422-3	1 1/2	1	3/4	5	8 1/2	9 1/2	1/2	5 1/4	2	1 3/8	4 3/8	8 3/8	11 5/16	15 13/16	18 3/8	5 1/4	10 1/2	6	12
6422-4	2	1 1/4	3/4	5	8 1/2	9 1/2	1/2	5 1/4	2	1 3/8	4 3/8	8 3/8	11 5/16	15 13/16	18 3/8	5 1/4	10 1/2	6	12
6422-5	2 1/2	1 1/2	1	5	8 1/2	9 1/2	1/2	5 1/4	2	1 3/8	4 3/8	8 3/8	11 5/16	15 13/16	18 3/8	5 1/4	10 1/2	6	12
6422-6	3	1 1/2	1	5	8 1/2	9 1/2	1/2	5 9/16	2	1 3/8	4 3/8	8 3/8	11 5/16	15 13/16	18 3/8	5 1/4	10 1/2	6	12
6422-7-A	4	2 1/2	1 1/4	7	10	11	9/16	6 15/16	2 5/8	2 1/8	5 7/8	11	15 1/8	20 1/16	22 5/8	6 1/8	12 1/4	6 3/4	13 1/2
6422-7-B	4	2 1/2	1 1/4	7	10	11	9/16	6 15/16	2 5/8	2 1/8	5 7/8	11	15 1/8	20 1/16	22 5/8	6 1/8	12 1/4	6 3/4	13 1/2
6422-8-A	6	2 1/2	2	7	10	11	9/16	10 11/16	2 5/8	1 3/4	5 7/8	11	15 1/8	20 1/16	22 5/8	6 1/8	12 1/4	6 3/4	13 1/2

- ① Pilot, Flame Detector, and Observation Port positions are interchangeable, as long as pilot and flame detector are in adjacent holes.
- ② Opening in furnace shell should be about 1/2" larger than dimension D₂ to allow for fillets and draft on mounting plate.
- ③ For 6422- -LC, -L4 and -L9 Burners only. Opening in oven shell should be about 1/4" larger than dimension D₃.
- ④ 1/4" body air pressure tap on -2, -3, -4, -5, and -6. 1/8" body air pressure tap on -7-A, -7-B and -8-A.
- ⑤ Pipe nipple not furnished by Fives.
- ⑥ Dimensions M and N assume the use of a 3/8" NPT close nipple between burner and Sensitrol Oil Valve.
- ⑦ For 6422-8-A, air and gas connections cannot be piped in the same plane because the "flower pot" type air connection flange would interfere with the 2 1/2" gas line.
- ⑧ Metal tubing is offered as an extra cost option (order as P.N. 3-0310-7).
- ⑨ Optional (recommended) Sensitrol Oil Valve is not included as part of the burner assembly, and must be ordered separately.