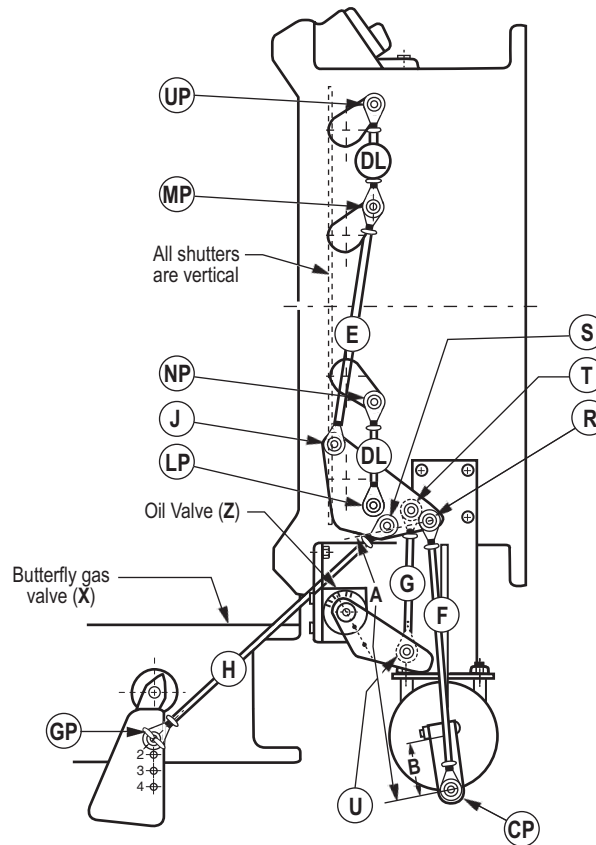


# Linkage and Pressure Settings with Herculine Actuator Gas and Heavy Oil

Sheet 6131-10-1

## 4131/6131-G BURNERS



### ADJUSTMENT SEQUENCE

1. Disconnect wing nut at gas butterfly valve.
2. Swing burner open.
3. Adjust rod (F) to dimension A.
4. Adjust rod (DL) and (E) so that all the shutters are vertical.
5. Adjust rod (G) so that the oil valve indicator is at position Z.
6. Swing burner closed.
7. Connect wing nut at gas butterfly valve.
8. Adjust rod (H) so that gas butterfly valve indicator is at position Z.

Sketch shows linkage in low fire position.