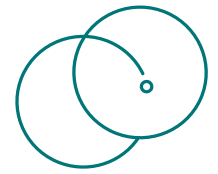




# fives



PROCESS  
TECHNOLOGIES

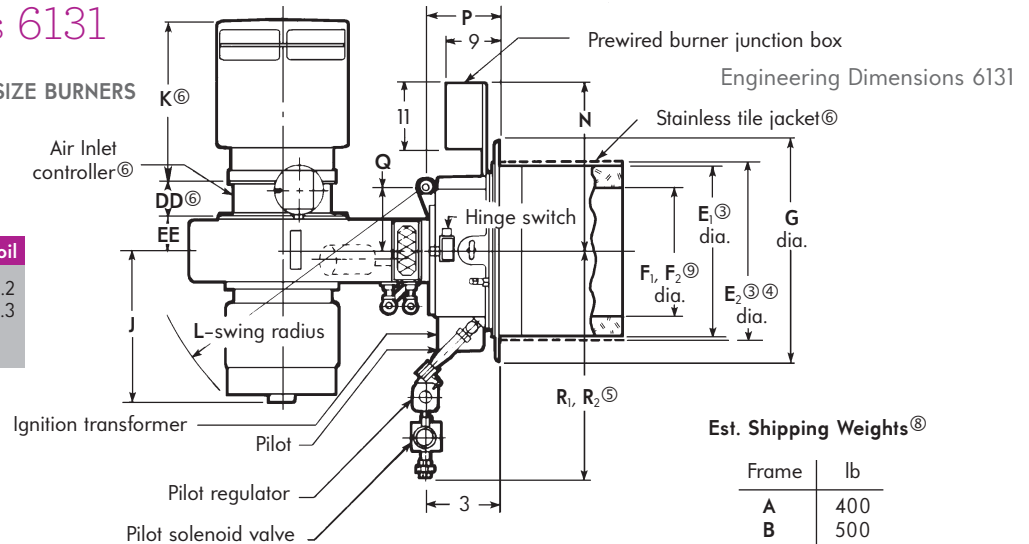
ENERGY | COMBUSTION

## 4/5/6131 North American Burners Engineering Dimensions 6131

### 4/5/6131-A, B, C, and CS FRAME SIZE BURNERS DIMENSIONS inches

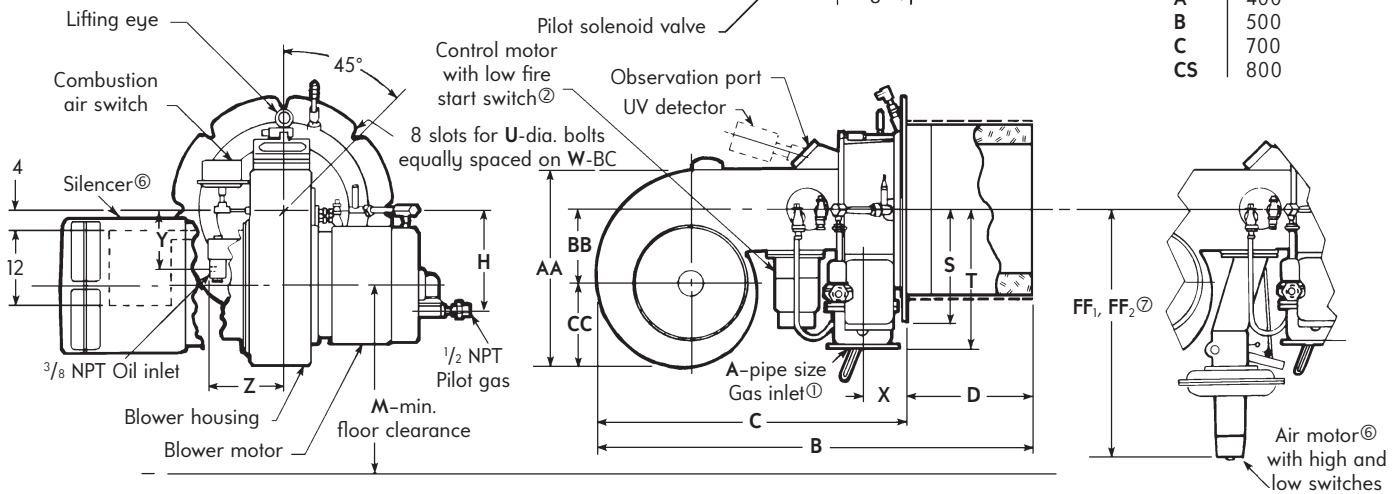
#### CAPACITIES million Btu/hr

Frame	gas and light oil	heavy oil
A	3.4 to 4.2	2.5 to 4.2
B	5.2 to 6.3	5.2 to 6.3
C	8.4 to 12.3	8.4
CS	8.4	—



#### Est. Shipping Weights<sup>®</sup>

Frame	lb
A	400
B	500
C	700
CS	800



131 Series Burner Frame Size 4131-, 5131-, 6131-	131 Series Burner Frame Size 4131-, 5131-, 6131-																
	A <sup>①</sup>	B	C	D	E <sub>1</sub> <sup>③</sup>	E <sub>2</sub> <sup>③④</sup>	F <sub>1</sub> <sup>⑨</sup>	F <sub>2</sub> <sup>⑨</sup>	G	H	J	K <sup>⑥</sup>	L	M	N	P	Q
A	3	36 3/4	25	11 3/4	16	16 3/4	13 1/2	13 1/2	20 3/4	10 3/4	14 1/4	11 3/4	23 1/2	22 1/2	21	6 15/16	6
B	3	41 3/8	29 5/8	11 3/4	16	16 3/4	11 1/2	13 1/2	20 3/4	10 3/4	14 1/2	13 7/8	27 1/8	25 1/2	21	6 15/16	6
C	4	46 1/8	32 1/4	13	19 1/2	20 1/4	14	16 3/8	24	17 1/2	20	16 1/4	31	26 1/2	23	11	6 13/16
CS	4	53	40	13	19 1/2	20 1/4	14	16 3/8	24	14 1/2	21 1/4	20	38	26 1/2	23	11	6 13/16

131 Series Burner Frame Size 4131-, 5131-, 6131-	131 Series Burner Frame Size 4131-, 5131-, 6131-																
	R <sub>1</sub> <sup>⑤</sup>	R <sub>2</sub> <sup>⑤</sup>	S	T	U	W	X	Y	Z	AA	BB	CC	DD <sup>⑥</sup>	EE	FF <sub>1</sub> <sup>⑦</sup>	FF <sub>2</sub> <sup>⑦</sup>	
A	20 1/2	24	10 3/8	15 3/4	1/2	19 1/2	4 1/4	8	6 3/4	13 3/4	5 1/8	5 7/8	5 11/16	2 3/4	29 1/4	27 3/4	
B	20 1/2	24	10 3/8	15 3/4	1/2	19 1/2	4 1/4	8	6 3/4	18 1/8	6 3/4	7 1/2	7 1/4	2 3/16	29 1/4	24 1/4	
C	28	49	12	16 1/4	5/8	22 3/4	5 3/4	10	7 1/2	17 1/4	6	7 3/8	7 1/4	5 1/2	29 3/4	31 1/2	
CS	28	31 1/2	12	16 1/4	5/8	22 3/4	5 3/4	9 1/4	8	21	6 3/8	9 1/8	7 1/4	5	29 3/4	31 1/2	

- ① ANSI 125 lb flanged connection. Not used on 5121 or 5131 Burners.
- ② Honeywell M9484 or M7284 motors shown. For other motor types, check with Fives North American Combustion, Inc.
- ③ Furnace opening for 131-A, B, and equivalent size 121 burners is 17" dia. (17 1/2" dia. with jacketed tile).  
Furnace opening for 131-C, CS, and equivalent size 121 burners is 20 1/2" dia. (21" dia. with jacketed tile).
- ④ With stainless steel tile jacket only.
- ⑤ If one pilot solenoid valve is used, dimension R<sub>1</sub> applies. Use dimension R<sub>2</sub> for burners with two pilot solenoid valves.
- ⑥ Optional, furnished only when ordered.
- ⑦ If Moore Positioner is used, dimension FF<sub>1</sub> applies. Use dimension FF<sub>2</sub> if the Moore Positioner is not supplied.
- ⑧ If air motor is used, add 50 lb to these figures.
- ⑨ If burner is gas and/or light oil, dimension F<sub>1</sub> applies. Use dimension F<sub>2</sub> if burner is heavy oil.