

CONSTRUCTION/INSTALLATION

Standard 4682 nozzles are heat resistant cast iron that will take 950°F **nozzle temperature**--since burners normally are surrounded by relatively cool ambient air, they can fire furnaces or kilns as hot as 2000°F without being damaged, as long as tunnel configuration into which they fire protects them from excessive radiation.

For **nozzle temperatures** up to 1350°F, alloy nozzles (N) are available.

For best operation, use at least 4 pipe diameters between nozzle and nearest fitting or mixer.

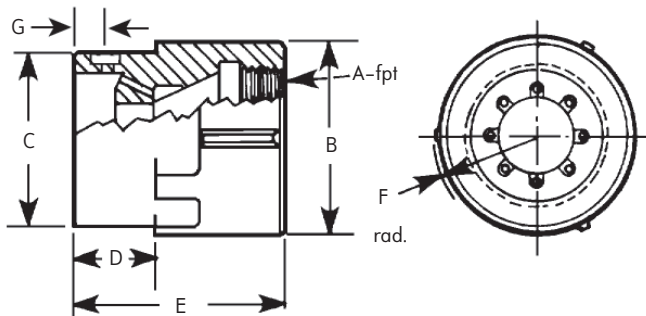
Conical mountings (MP) facilitate proper positioning of pilots and flame detectors, also help assure alignment of nozzle with firing tunnel in furnace wall.

Tiles of 3000°F dense castable material are available; or tunnels can be rammed into the furnace wall (see note under Table 3 on page 4).

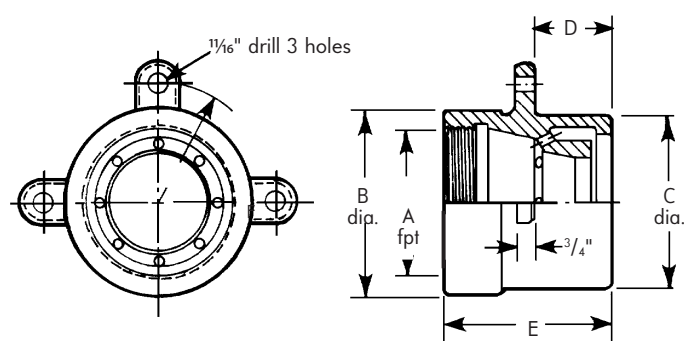
For 4682-0 through -7 sizes, order mountings and/or tiles as separate items. 4682-8 and -9 Burners can be ordered as separate pieces--nozzle, air register (with shutter to control secondary air), mounting plate, tile--or with all of these in an assembly.

Flame supervision can be accommodated with a combo flame rod igniter with the 4682-CFI option in sizes -3, -4, -5 and -6. Consult Fives North American Combustion, Inc. for other arrangements appropriate for your application.

BURNER NOZZLE DIMENSIONS



4682-0 through -7



4682-8 and -9

Table 2

Nozzle designation	dimensions in inches							Wt, lb
	A	B	C	D	E	F	G	
4682-0-A,-0-B,-0-C/BO	3/4	1 7/8	1 3/4	1 1/16	2 23/32	1 1/16	1 3/16	2
4682-1-A,-1-B/BO	1	2	1 13/16	1 3/16	2 23/32	1 1/8	3/4	2
4682-2-A,-2-B,-2-C,-2-D/BO	1 1/4	2 7/16	2 1/4	1 3/16	2 27/32	1 11/32	1 1/16	3
4682-3-A,-3-B/BO	1 1/2	2 3/4	2 9/16	1 1/16	3 1/32	1 1/2	1/2	3
4682-4-A,-4-B,-4-C/BO	2	3 1/8	2 15/16	1 3/8	3 9/16	1 11/16	5/8	5
4682-5-A,-5-B/BO	2 1/2	3 5/8	3 3/8	1 3/8	4 1/8	1 5/16	3/4	6
4682-6-A,-6-B,-6-C/BO	3	4 1/4	4 1/16	1 3/8	5 1/4	2 1/4	1 3/16	11
4682-7-A,-7-B,-7-C/BO	4	5 3/8	5 3/16	1 3/8	6 1/4	2 7/8	5/8	22
4682-8-A,-8-B,-8-C,-8-D/BO	6	7 3/4	7 3/8	3 5/16	7 1/8	5	---	32
4682-9/BO	8	9 7/8	9 7/16	6 1/16	8 5/8	6 1/4	---	50

For alloy nozzles, place "N" before "/", e.g. 4682-1-AN/BO.

For nozzles with spark plug tap, add "T" before "/". e.g. 4682-1-AT/BO or 4682-1-ANT/BO

Separately order spark plug R240-2465

"G" = spark plug tap location