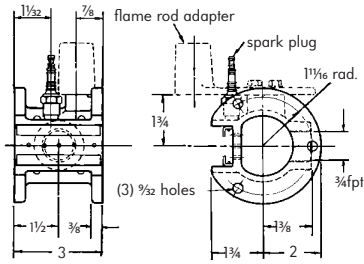
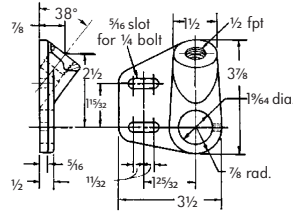


4630 Auxiliary Sections & Accessories



**4630-P Pilot Section** (wt. 4 lb)

Complete with spark plug, two separator plates, and provision for adding an 883\_J flame rod adapter. This 3" section has 3/4" bottom inlet and takes a 3065-0-7 Mixer (do not specify a capacity rating).

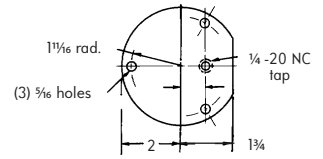


**4-2408-3 Pilot and Flame Rod Bracket**

(wt. 1 lb)

For mounting a 4021-15 or 4021-16 Pilot Tip and an "M" style flame rod adapter. Use with Part No. 4-2167-1.

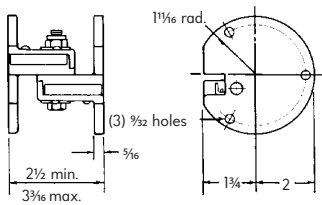
Flame Rod Part No. R130-7116



**4-2167-1 Companion Endplate**

(wt. 1 lb)

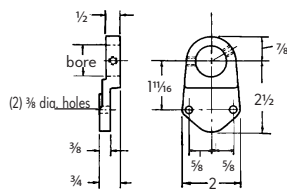
For mounting 4-2408-3 pilot and flame rod bracket, as shown in center of photo on Page 4.



**4-3159-1 Expansion Ignition Coupling**

(wt. 3 1/4 lb)

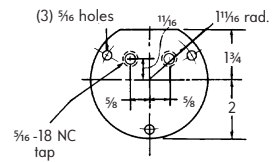
Used in place of and far superior to the separator plate. It can telescope to absorb some expansion in an assembly when burners heat. It permits low fire side to pilot high fire side and vice versa.



**Pilot Bracket\*** (wt. 1 lb)

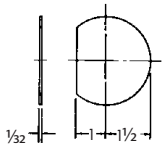
For mounting pilot tip only (no flame rod) as selected from table below. Use with Part No. 4-0804-2 as shown at rear of photo on page 4.

*Pilot Bracket	Bore	for Pilot Tip
4-0680-1	1/64	4021-13, 4021-14,
4-0680-2	1/64	4021-15, 4021-16



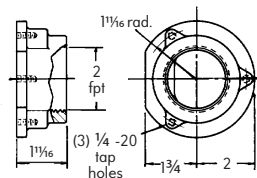
**4-0804-2 Companion Endplate** (wt. 1 lb)

For mounting pilot bracket, as shown at rear of photo on Page 4.



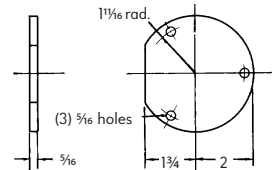
**4-1739-1 Separator Plate** (wt. 1/4 lb)

Used to separate mixer zones within an assembly. If all mixture pressures in an assembly are essentially equal, flame will cross separator plates so one pilot suffices for the entire assembly.



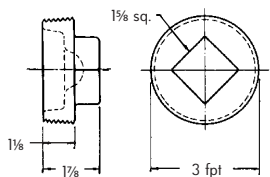
**4-0803-1 2" Inlet Flange** (wt. 2 lb)

Bolted to the end of any section, it provides a threaded 2" pipe size feed connection.



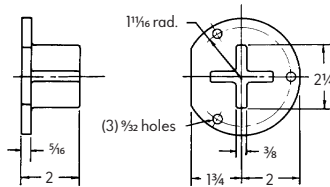
**4-0804-1 Std. Endplate** (wt. 1 lb)

Used to close ends of an assembly.



**3" Pipe Plug  
Std. Sq. Hd** (wt. 3 1/4 lb)

For plugging unused feed connections.



**4-0827-1 Supporting Endplate**

(wt. 1 3/4 lb)

In addition to closing the end of an assembly, it provides a 2" projection for supporting the assembly (see rear of photo on Page 4).

**4630HK Hardware Kit** (wt. 1/4 lb)

Used to connect sections and accessories. Three fasteners per kit; one kit per connection. Hardware Kit consists of three hex head bolts (1/4 -20 UNC by 1 1/4" lg.) and three hex nuts (1/4").

Hardware is included with each main burner section.