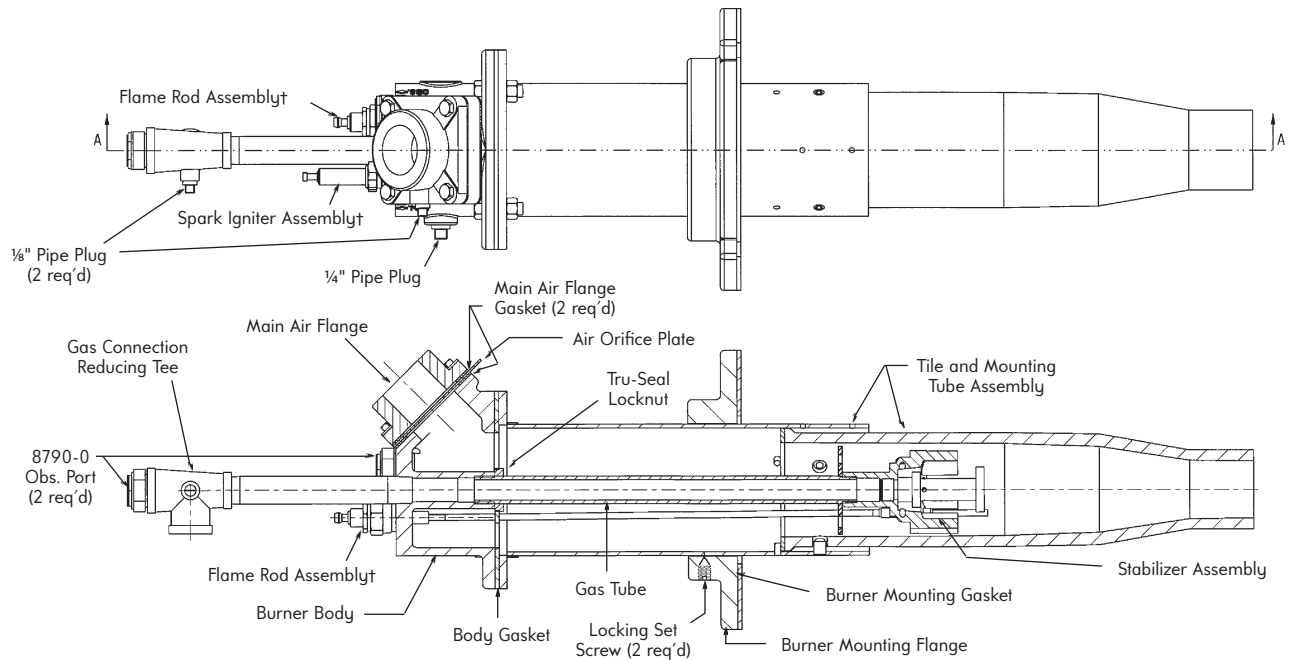


4445-2 THROUGH -4-B PARTS LIST



† When replacing igniter and/or flame rod assemblies in the field, it is recommended that the burner body be removed from the tile mounting tube flange to ensure insertion into the access holes provided and not into one of the air tubes on either side.

Part name	Burner designation			
	4445-2	4445-3	4445-4-A	4445-4-B
Main Air Flange	OA4-0433-1	4-1695-1	4-1695-10	4-1695-10
Air Orifice Plate	4-22933-2	4-22933-3	4-22933-4	4-22933-5
Main Air Flange Gasket			4-5371-1	
Burner Mounting Flange			4-21985-1	
Locking Set Screw		R776-2545-CO		
Mounting Flange Gasket			4-24724-1	
Gas Connection Reducing Tee			4-25182-1	
Body Gasket			4-25638-1	
Burner Body			4-22934-1	
Spark Igniter Assembly				
"S" Model			4-24752-1	
"M" Model			4-24752-2	
"L" Model			4-24752-3	
"E" Model			4-24752-4	
Flame Rod Assembly				
"S" Model			4-24745-1	
"M" Model			4-24745-2	
"L" Model			4-24745-3	
"E" Model			4-24745-4	
<b>Gas Components Sub-assembly*</b>				
"S" Model	4-25195-1	4-25195-6	4-25195-11	4-25195-16
"M" Model	4-25195-2	4-25195-7	4-25195-12	4-25195-17
"L" Model	4-25195-3	4-25195-8	4-25195-13	4-25195-18
"E" Model	4-25195-4	4-25195-9	4-25195-14	4-25195-19
Gas Tube				
"S" Model (all sizes)			4-21958-1	
"M" Model (all sizes)			4-21958-2	
"L" Model (all sizes)			4-21958-3	
"E" Model (all sizes)			4-21958-4	
Tru-Seal Locknut (all models)			R790-0120	
Stabilizer Assembly (all models)	4-25292-2	4-25292-3	4-25292-4	4-25292-5

Tile and Mounting Tube Assembly

"S" Model	-2	-3	-4-A	-4-B	"L" Model	-2	-3	-4-A	-4-B
Round Alumina/Mullite	4-24901-5	4-24901-6	4-24901-7	4-24901-8	Round Alumina/Mullite	4-24874-18	4-24874-22	4-24874-26	4-24874-30
Slotted Alumina/Mullite	4-24902-5	4-24902-6	4-24902-7	4-24902-8	Slotted Alumina/Mullite	4-24723-18	4-24723-22	4-24723-26	4-24723-30
Round Metal Alloy	4-25005-1	4-25005-2	4-25005-3	4-25005-4	Round Metal Alloy	4-25004-2	4-25004-6	4-25004-10	4-25004-14
"M" Model					"E" Model				
Round Alumina/Mullite	4-24874-17	4-24874-21	4-24874-25	4-24874-29	Round Alumina/Mullite	4-24874-19	4-24874-23	4-24874-27	4-24874-31
Slotted Alumina/Mullite	4-24723-17	4-24723-21	4-24723-25	4-24723-29	Slotted Alumina/Mullite	4-24723-19	4-24723-23	4-24723-27	4-24723-31
Round Metal Alloy	4-25004-1	4-25004-5	4-25004-9	4-25004-13	Round Metal Alloy	4-25004-3	4-25004-7	4-25004-11	4-25004-15

\* Includes: Tru-Seal Locknut, Gas Tube, and Stabilizer Assembly.