

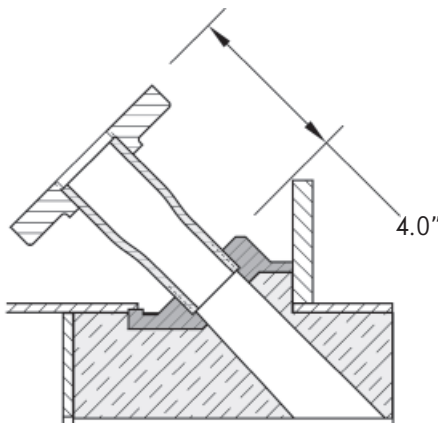
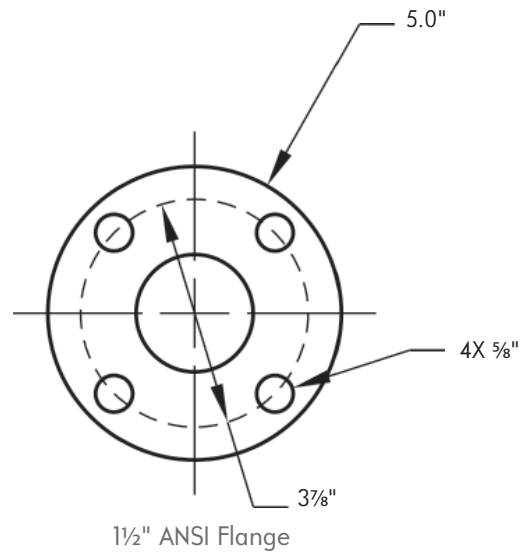
Adapter flange, part list and dimensions

4058-AF BURNER MOUNTING ADAPTER FLANGE KITS

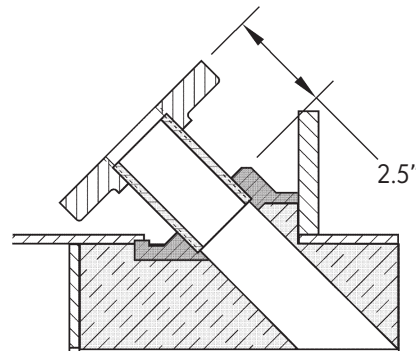
The 4058 High Energy Igniter Assembly has a 1½" ANSI flange connection to attach to a mating flange on the burner. For most burners additional pipe fittings are required to attach a 1½" ANSI flat face flange to the threaded pilot port on the burner.

4058-AF_ ADAPTER FLANGE ORDERING INFORMATION

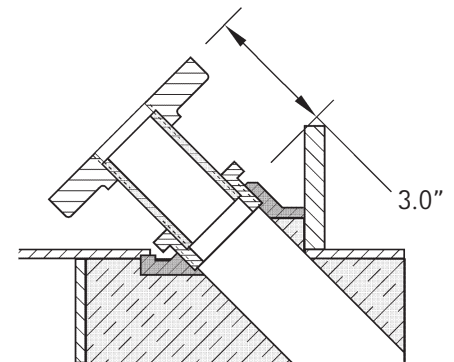
- 4058-AF-2** 1¼" NPT pipe fitting to 1½" ANSI flange
- 4058-AF-3** 1½" NPT pipe fitting to 1½" ANSI flange
- 4058-AF-4** 2" NPT pipe fitting to 1½" ANSI flange
- 4058-AF-5** 2½" NPT pipe fitting to 1½" ANSI flange
- 4058-AF-6** 3" NPT pipe fitting to 1½" ANSI flange



4058-AF-2 with 1¼" Mounting Port



4058-AF-3 with 1½" Mounting Port



4058-AF-4 with 2" Mounting Port

Figure 12

4058-AF Parts List

Table 4

	AF-2 1¼"	AF-3 1½"	AF-4 2"	AF-5 2½"	AF-6 3"
1½" ANSI flange	8767C-3 (Threaded Flat Flange)				
1½" ANSI gasket	OA3-2302-42F4 (1/8" THK)				
½"-13 x 2¼ long bolt	8737C-3 (4 req'd)				
½" - 13 nut	R510-2319-C (4 req'd)				
½" SAE washer	R970-7370-C (4 req'd)				
Adapter nipple	R590-7355	R590-6703 (1½" : 3" Long)			
Adapter bushing	—	—	R590-0710	R590-0757	R590-0807-S1