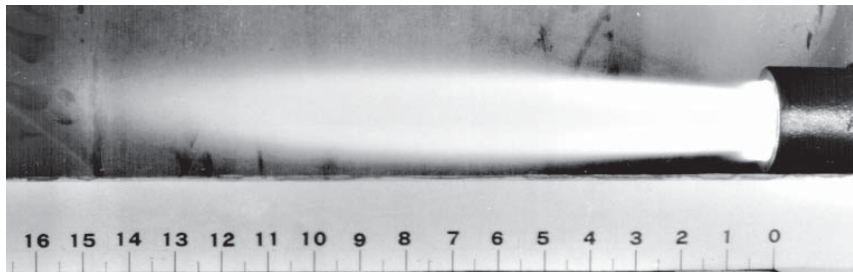
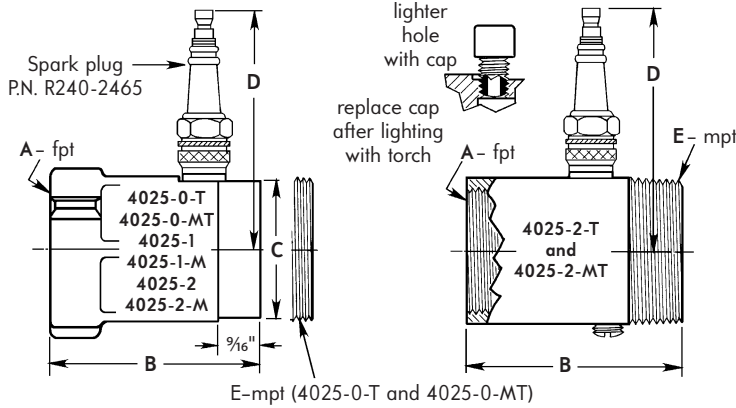


flame of a
4015-2
at 3½"wc

scale: inches

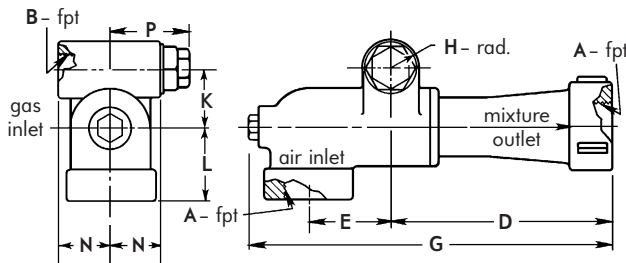


PILOT TIPS



Pilot Tip number	dimensions in inches				
	A	B	C	D	E
4025-1	1	2 ²³ / ₃₂	1 ²³ / ₃₂	3 ¹ / ₁₆	-
4025-2	1 ¹ / ₄	2 ²³ / ₃₂	1 ³¹ / ₃₂	3 ³ / ₁₆	-
4025-0-T	3 ³ / ₄	2 ²³ / ₃₂	-	3	1 ¹ / ₄
4025-2-T	1 ¹ / ₄	3 ¹ / ₁₆	-	3 ³ / ₁₆	1 ¹ / ₂
4025-1-M	1	2 ²³ / ₃₂	1 ²³ / ₃₂	-	-
4025-2-M	1 ¹ / ₄	2 ²³ / ₃₂	1 ³¹ / ₃₂	-	-
4025-0-MT	3 ³ / ₄	2 ²³ / ₃₂	-	-	1 ¹ / ₄
4025-2-MT	1 ¹ / ₄	3 ¹ / ₁₆	-	-	1 ¹ / ₂

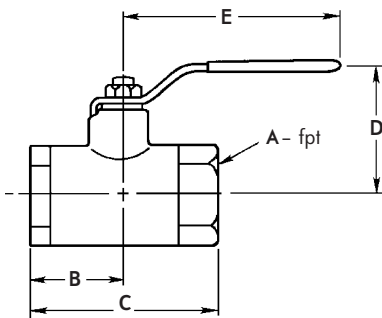
PILOT MIXERS



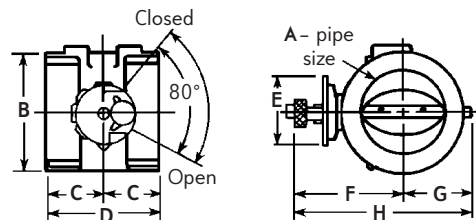
Mixer designation	dimensions in inches										wt, lb
	A	B	D	E	G	H	K	L	N	P	
3065-0	3 ³ / ₄	1 ¹ / ₂	4 ¹ / ₃₂	1 ³ / ₄	7 ⁹ / ₃₂	5 ⁸ / ₁₆	1 ³ / ₁₆	1 ²¹ / ₃₂	1 ¹ / ₄	2	4
3065-1	1	3 ³ / ₄	4 ¹ / ₈	1 ¹³ / ₁₆	7 ⁷ / ₁₆	3 ³ / ₄	1 ¹ / ₈	1 ⁷ / ₈	1 ¹ / ₃₂	2 ¹ / ₃₂	5
3065-2	1 ¹ / ₄	1	5 ⁷ / ₈	2 ¹ / ₁₆	9 ⁵ / ₈	7 ⁸ / ₁₆	1 ²¹ / ₃₂	2 ¹ / ₃₂	1 ¹⁵ / ₃₂	2 ⁷ / ₃₂	7

3065 Mixer rod size (stamped on nut) should be #7 for 4025-0 Pilot, #9 for 4025-1, #12 for 4025-2.

GAS COCKS



AIR VALVES



Valve designation	dimensions in inches					wt, lb
	A	B	C	D	E	
1821-01	1 ¹ / ₂	1 ¹ / ₈	2 ¹ / ₄	1 ¹³ / ₁₆	3 ⁷ / ₈	0.6
1821-0	3 ³ / ₄	1 ¹ / ₂	3	2 ¹ / ₈	4 ⁷ / ₈	1 ¹ / ₄
1821-1	1	1 ¹ / ₁₆	3 ³ / ₈	2 ¹ / ₄	4 ⁷ / ₈	1 ³ / ₄

Valve designation	dimensions in inches								wt, lb
	A	B	C	D	E	F	G	H	
1122-0	3 ³ / ₄	2 ¹ / ₁₆	1 ³ / ₁₆	2 ³ / ₈	3	2 ³ / ₄	1 ³ / ₁₆	3 ¹⁵ / ₁₆	2
1122-1	1	2 ¹ / ₁₆	1 ³ / ₁₆	2 ³ / ₈	3	2 ³ / ₄	1 ³ / ₁₆	3 ¹⁵ / ₁₆	2
1122-2	1 ¹ / ₄	2 ⁵ / ₁₆	1 ¹ / ₄	2 ¹ / ₂	3	2 ¹³ / ₁₆	1 ⁵ / ₁₆	4 ¹ / ₈	2 ¹ / ₄

DIMENSIONS SHOWN ARE SUBJECT TO CHANGE. PLEASE OBTAIN CERTIFIED PRINTS FROM FIVES NORTH AMERICAN COMBUSTION, INC. IF SPACE LIMITATIONS OR OTHER CONSIDERATIONS MAKE EXACT DIMENSION(S) CRITICAL.